



Unior d.d.
Kovaška cesta 10
3214 Zreče, Slovenia
T: +386 3 757 81 00
www.uniortools.com

90824415

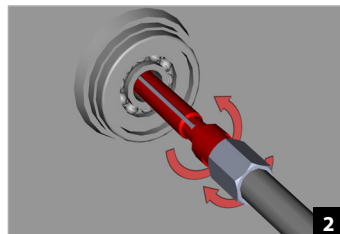
689/2BI

EN Inner bearing puller

SLO Snemalec za notranje izvlačenje ležajev

 **UNIOR**[®]
uniortools.com

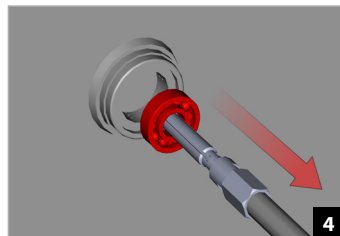
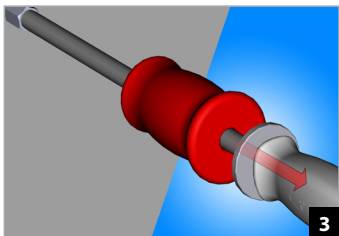
TOOL PREPARATION...



Before starting the application, you need to screw appropriate extractor dimension on the handle • Pred začetkom uporabe, privijačimo ustrežno dimenzijo izbijalca na ročico.

First inserted extractor through the hole in the bearing which will be dismount out of the housing. Then start to screw thorn into extractor, which has a function that opens puller body, which adapts to the bearing bores • Najprej izbijalec vstavimo skozi izvrtino na ležaju katerega bomo izbili iz ohišja. Nato pričnemo privijati trn, katero funkcijo ima da razpre telo snemalca, ki se prilagodi izvrtini na ležaju.

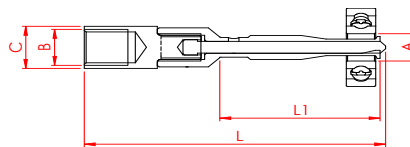
BEARING REMOVING...



Then start with steady hits dismounting bearing with help of sliding hammer • Nakar pričnemo z enakomernimi udarci izbijati ležaj iz ohišja z pomočjo udarnega kladiva

After several strokes fast and easy dismount bearing from housing without damage • Po nekaj kratnih udarcih hitro in enostavno izbijemo ležaj iz ohišja brez poškodb

TECHNICAL DATA



| A | B | L1 | L | kg | C |
|---------|-----|----|-------|-------|-----|
| Ø 6.5-8 | M12 | 44 | 81 | 0,045 | S14 |
| Ø 10-12 | M12 | 45 | 83 | 0,055 | S14 |
| Ø 12-15 | M12 | 55 | 92 | 0,069 | S14 |
| Ø 17-20 | M12 | 62 | 102.5 | 0,136 | S14 |
| Ø 22-28 | M12 | 70 | 125 | 0,285 | S17 |
| Ø 30-36 | M12 | 75 | 140 | 0,54 | S22 |

CAN BE USED ON BEARINGS...



WHEN WORKING
ALWAYS USE SAFETY EQUIPMENT

