

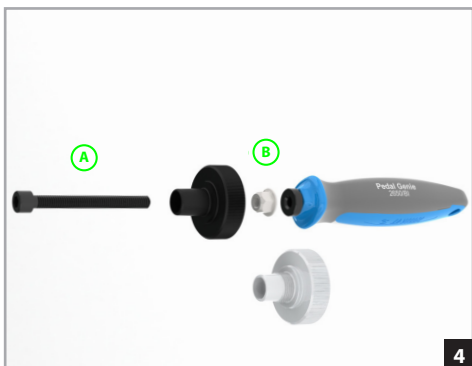
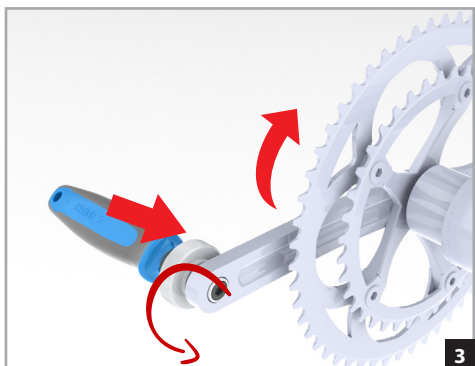
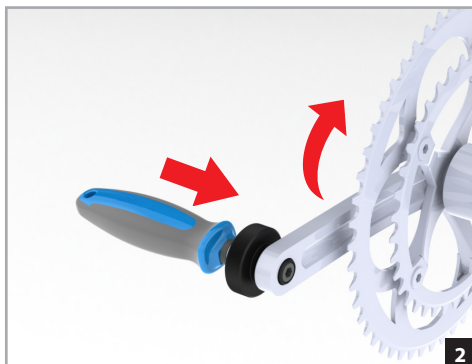
2650BI

EN

Pedal genie

SLO

Pedal nadomestni



## EN

1. Pedal genie comes with two head options. The preinstalled one is friction fit and the additional head is made of aluminum and threaded for precise fit.

2. Friction fit head usage

3. Threaded head usage (drive side use only)

4. Changing Pedal genie head

Hold the nut (1A) with a 10 mm open end wrench and unscrew the bolt (1B) with the 5 mm Hex wrench. Change the head of Pedal genie and assemble it in the opposite way of disassembly. Make sure to adjust the preload on the head with nut and bolt for smooth spinning of the head.

## SLO

1. Orodje Pedal genie odlikuje izmenljiva glava. Serijsko je na orodju nameščena konična glava, dodatno pa je orodju priložena aluminjska glava z navojem, ki omogoča natančnejše prileganje.

2. Uporaba konične glave

3. Uporaba glave z navojem (uporaba samo na pogonski strani kolesa)

4. Menjava glave Pedal genie

Z 10 mm viličastim ključem pridržite matico (1A) ter odvijte vijak (1B) s 5 mm imbus ključem. Zamenjajte glavo in orodje sestavite po enakem postopku, kot ste ga razstavili. Natančno nastavite pritovitost vijaka ter matice za gladko vrtenje glave orodja.



Unior d.d.

Kovaška cesta 10  
3214 Zreče, Slovenia  
T: +386 3 757 81 00  
www.uniortools.com