

2038

EN Inner bearing race puller

SLO Snemalec notranjih ležajnih obročev

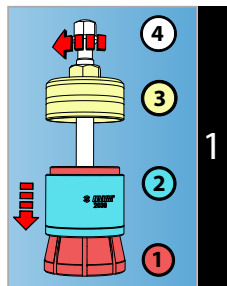


Unior d.d.  
Kovaška cesta 10  
3214 Zreče, Slovenia  
T: +386 3 757 81 00  
[www.uniortools.com](http://www.uniortools.com)

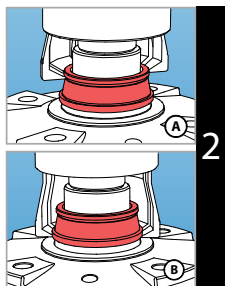
90823299

 **UNIOR**<sup>®</sup>  
[uniortools.com](http://uniortools.com)

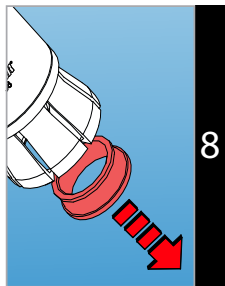
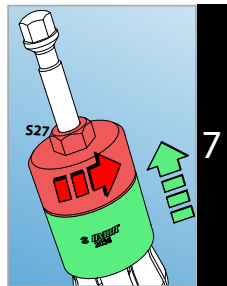
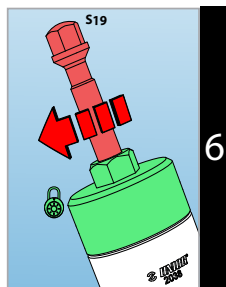
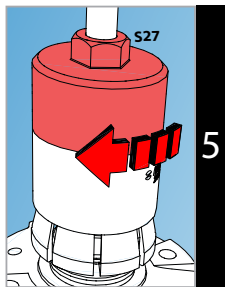
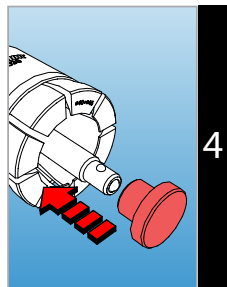
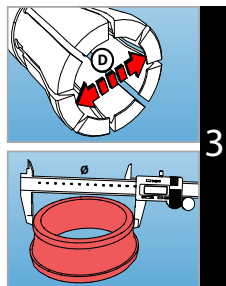
## TOOL ASSEMBLY...



## WHERE TO APPLY ...



## USAGE INSTRUCTIONS ...



## ENG

## SLO

**1** On the track bush (1) place the pushing bush (2) and on this put the track nut (3) with a spindle (4).

**1** Na stezno pušo (1) namestite potisno pušo (2), ter nanju privijte stezno matico (3) z vretenom (4).

**2** You can place the track bush: into the slot on the bearing race (A) or under the bearing race (B).

**2** Stezno pušo lahko namestite: v utor na ležajnem obroču (A), ali pod ležajni obroč (B).

**3** Choose the right size of the track bush (D) regarding the outer diameter of the bearing race (Ø).

**3** Izberite pravilno velikost stezne puše (D) glede na zunanji premer ležajnega obroča (Ø).

**4** If you pull the bearing race from the wheel hub you must place on the spindle also suitable support for the spindle. The support is not necessary by pulling the bearing race from the shaft.

**4** Če snemate ležajni obroč iz pesta kolesa, morate na vreteno namestiti tudi ustrezen podstavek vretena. Pri snemanju ležajnega obroča iz gredi, podstavka ne potrebujete.

**5** Put the race puller over the bearing race and screw with hand the track nut - you can use also the wrench (S27) untill the track bush reaches the bearing race.

**5** Snemalec namestite čez ležajni obroč in privijte stezno matico z roko, pomagata si lahko tudi s ključem (S27), dokler stezna puša ne objame ležajnega obroča.

**6** Start to turn the spindle (S19) and with this pulling the bearing race - by this hold with wrench the track nut.

**6** Vreteno začnite privijati (S19), ter s tem snemati ležajni obroč, ob tem s ključem pridržite stezno matico.

**7** After pulling the bearing race unscrew the track nut with a wrench (S27).

**7** Po snetju ležajnega obroča, odvijte stezno matico s ključem (S27).

**8** Remove the bearing race from the puller.

**8** Iz snemalca odstranite ležajni obroč.