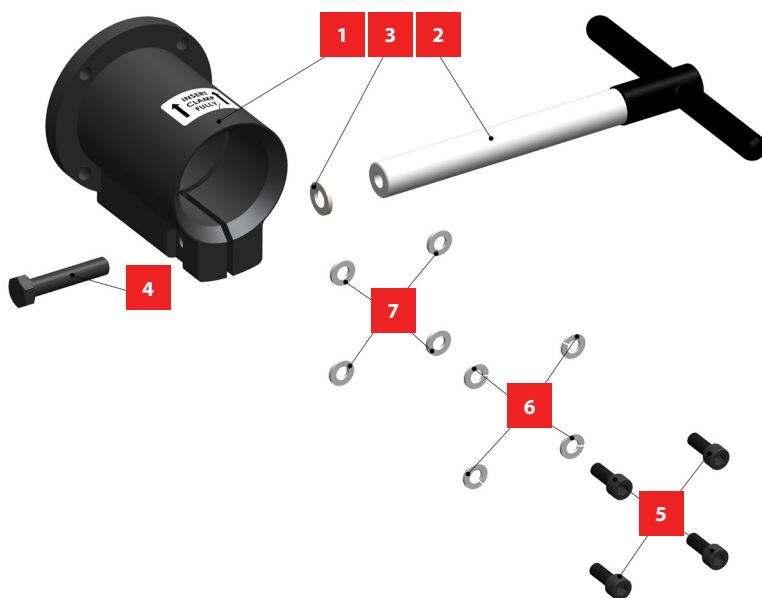


EN

INSTRUCTION FOR ASSEMBLY T-HANDLE WITH CLAMPING BRACKET AND MASTER SHOP REPAIR CLAMP

uniorbiketools.com


POSITION	NAME	QUANTITY
1	Clamp bracket	1
2	Clamp bracket t-handle	1
3	Washer M8	1
4	Hex head bolt M8x40, black	1
5	Countersunk hex bolt. M6x16 black	4
6	Spring washer M6	4
7	Washer M6	4
8	Master shop repair clamp	1

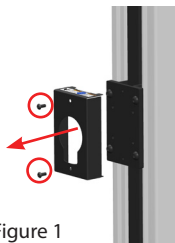


Figure 1

Unscrew the 2x M5x30 screws and remove the clamping bracket cover. See figure 1.

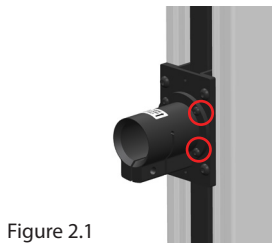


Figure 2.1



Figure 2.2

Screw the clamping bracket with 4x M6x16 screws and 4x M6 washers and 4x M6 spring washers. See figure 2.1 in 2.2.

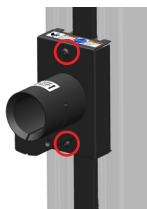


Figure 3

Install the cover by tightening two screws M5x30. See figure 3

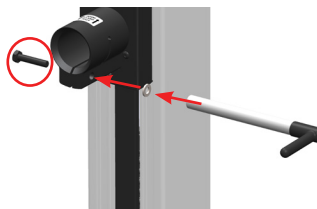


Figure 4

Install clamp bracket T-handle with bolt M8x40 and M8 washer. See figure 4

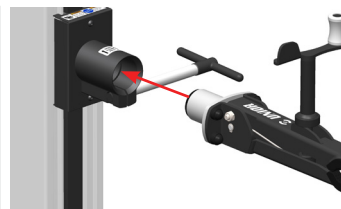


Figure 5

Install Master shop clamp. See figure 5 (Attention! Master shop clamp should be inserted all the way into the clamp bracket.)

