



Testing the Remote Controller system

- Plug-in the power cord and turn-on the key
- Press and hold the **button Up** on remote controller for about 2 seconds. The stand should start to move upwards and should stop after releasing the **button Up**.
- Short press and release of **button Up**. The stand should start to move upwards until the press of button **Stop** on remote controller before it reaches upper limit position.
- Repeat the same procedure for **button Down** and **Stop** on remote controller.



Unior d.d.
Kovaška cesta 10
3214 Zreče, Slovenia
T: +386 3 757 81 00
www.uniorbiketools.com

909682801

1693EL.20

EN

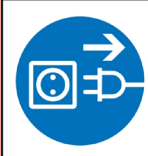
Remote control set

SLO

Set za daljinsko upravljanje

 **UNIOR**[®]
BIKE TOOLS

uniorbiketools.com



CAUTION

Turn off and unplug before opening.

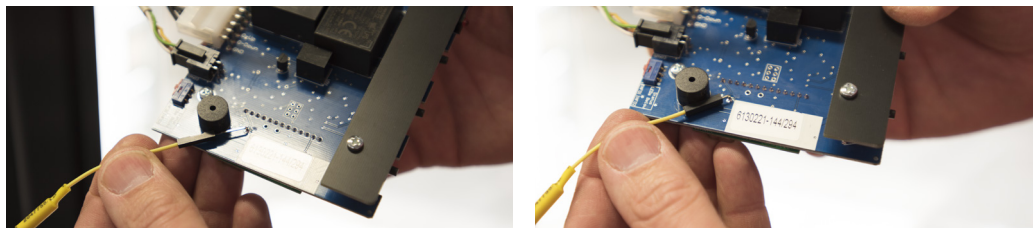
Turn-off the power key and disconnect power cord



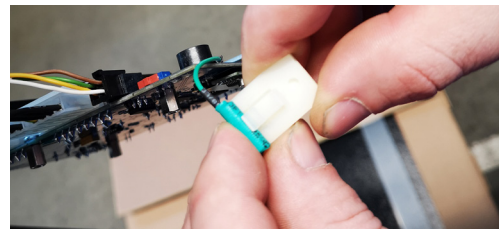
Unscrew and pull out the controller module - remove four screws at the bottom of enclosure (no need to disconnect cables from controller, it can be left out of enclosure by hanging on the cables).



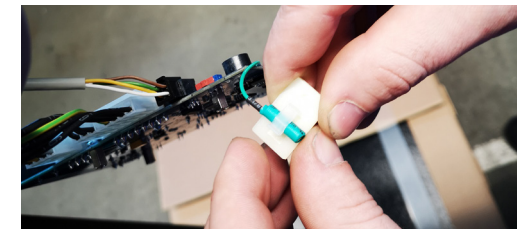
Install remote receiver into the socket connector on the bottom of controller. **Caution!** Remote receiver is electrostatic sensitive device. Avoid touching the contacts of Receiver before it is installed into the socket. Install receiver precisely to predefined location, marked with white rectangle on the controller.



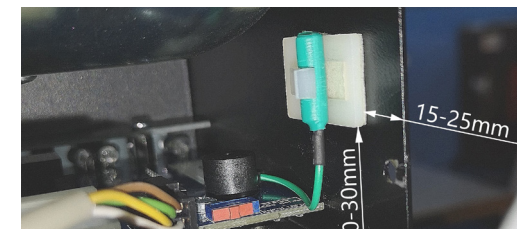
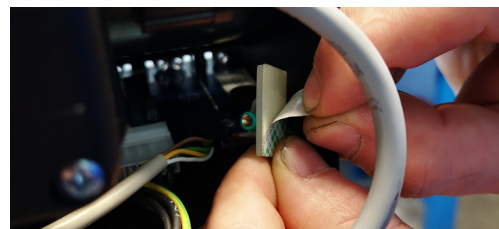
Plug-in the antenna connector into the controller.



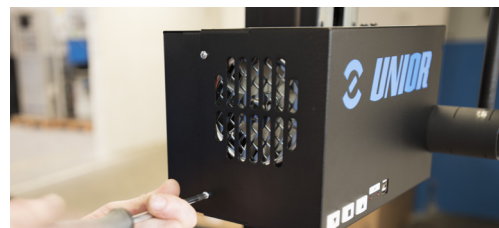
Attach the antenna into the antenna holder.



Install the controller back into the enclosure and fix it with four screws.



Receiving signal from remote controller depends of antenna position so the self-adhesive holder must be attached as presentend on image.



Close the enclosure rear cover and attach it with screws.