



1693.3

EN

Tool tray with SOS for 1693

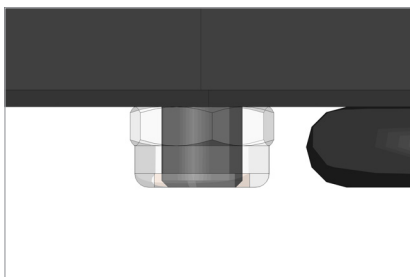
SLO

Posoda odlagalna z
vložkom SOS za 1693



UNIOR[®]
BIKE TOOLS

uniorbiketools.com



ASSEMBLY OF THE TOOL TRAY ...

Insert all the four screws through the foam tray and metal plate, then screw the four attached nuts.

Use a 4 mm hexagonal wrench and a 10 mm wrench, screw the nuts till the end point of the screw so they are leveled.

MONTAŽA ODLAGALNE POSODICE ...

Vstavite vse štiri vijake skozi odlagalno peno in kovinsko ploščo, nato privite štiri priložene matice.

Uporabite inbus ključ 4 mm ter viličasti ključ 10 mm. Matice privite do končne točke vijaka, tako da so izravnane.



Unior d.d.
Kovaška cesta 10
3214 Zreče, Slovenia
T: +386 3 757 81 00
bike@unior.com
www.uniorbiketools.com