

# BOTTOM BRACKET SOCKET

All models of bottom bracket sockets are precision CNC machined tools for installation and removal of different external bottom bracket cups. They are made of aluminum billet and anodized red for durable finish and precise fit, that won't damage aluminum external bottom bracket cups.

Knurling on the side of the socket creates better grip when threading cups by hand, meanwhile 1/2" square drive makes it easy to use with torque wrenches, ratchets and fixed handles.

## BB90000



## BBR60



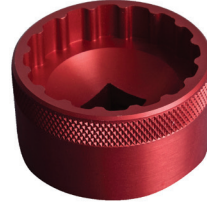
## BSA30



## MEGAEVO



## 16 NOTCH



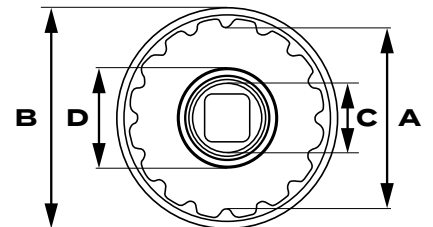
## T47



CODE	ART.	CODE	ART.	CODE	ART.	CODE	ART.	CODE	ART.	CODE	ART.
627619	1671.BB9000	627620	1671.BBR60	627621	1671.BSA30	627622	1671.MEvo	627623	1671.16N	628495	1671.T47

BOTTOM BRACKET		UNIOR TOOL					
MANUFACTURER	MODEL	1671.BSA30	1671.BBR60	1671.BB9000	1671.MEGAEVO	1671.16N	1671.T47
Campagnolo	Fits most models					X	
Chris King	Fits most models					X	
Chris King	Thread fit T47 30X & 24X						X
Enduro	T47 with OD 52.2 mm						X
Enduro	TorqueTite PF30 with OD 52.2 mm						X
FSA	MegaEvo				X		
FSA	MegaExo					X	
Praxis	T47*						X
Race Face	Cinch	X					
Race Face	X-Type					X	
Rotor	BSA30						
Shimano	BBR60		X				
Shimano	Dura-Ace 9000			X			
Shimano	Hollowtech II					X	
Shimano	MT60		X				
Shimano	XTR BB93			X			
SRAM	DUB T47						X
SRAM	DUB	X					
SRAM / Truvativ	GXP					X	
Zipp	Vuma	X					
Hawk Racing	BB3086	X					
Wheels Mfg	PF30				X		
Wheels Mfg	T47						X

\* 1671.T47 is not compatible with Praxis T47 GXP non drive side cup.



UNIOR BOTTOM BRACKET SOCKETS SPECIFICATIONS					
TOOL	# NOTCHES	NOTCH DIAMETER	SOCKET DIAMETER	GUIDE DIAMETER	GUIDE ADAPTER DIA.
1671.BSA30	12	44,2	53	/	/
1671.BBR60	16	39	47	/	/
1671.BB9000	16	39,4	45	/	/
1671.MEVO	16	46,4	56	/	/
1671.16N	16	42,7	52	/	/
1671.T47	16	49	60	23,8	28,8
1671.T47	12	46,6	60	23,8	29,8*