

1. Handle
2. Chain tool body
3. Spindle
4. Ball-bearing (Available as a spare part, item code 627253)
5. Pin
6. Additional spare pin (Available as a spare part, item code 621734)
7. Pin nut (Available as a spare part, item code 627254)
8. Spare pin compartment cover/Campagnolo peening screw
9. Chain support long type, compatible with all 6 – 12 speed road and MTB derailleur chains
10. Chain support, short type (silver) compatible with all 6 – 12 speed road and MTB derailleur chains
11. Chain support, SRAM Flat Top chains (black)
12. Chain support preset fixing bolts



Unior d.d.  
 Kovaška cesta 10  
 3214 Zreče, Slovenia  
 T: +386 3 757 81 00  
[www.uniorbiketools.com](http://www.uniorbiketools.com)

9096831Z

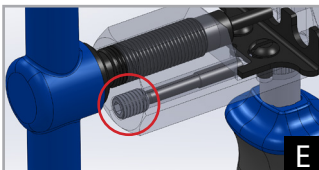
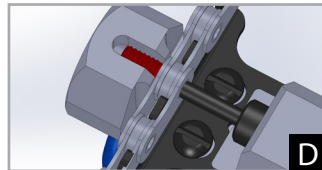
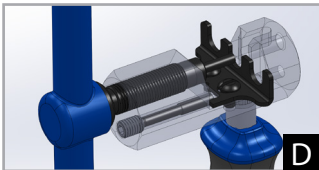
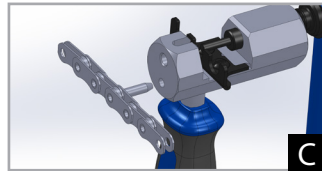
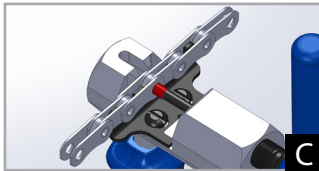
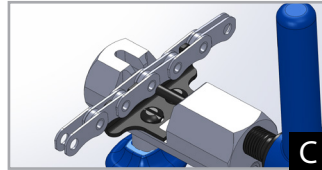
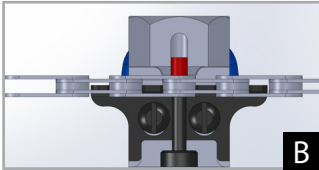
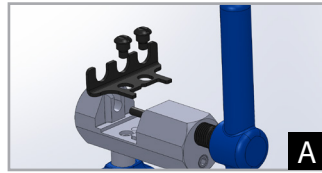
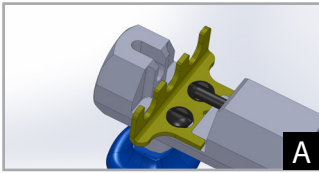
1647/2BBI

EN

Master chain tool

 **UNIOR**<sup>®</sup>  
 BIKE TOOLS

[uniorbiketools.com](http://uniorbiketools.com)



**A**

#### Selecting and changing the floating chain support:

The Unior Master Chain Tool comes with 3 different floating chain supports to ensure the perfect fit with a wide variety of different chain designs. To prevent damage to the chain or tool and ensure proper chain positioning, we recommend using the appropriate chain support for the given chain.

To change the chain support simply loosen the chain support preset fixing bolts by turning them counter-clockwise. Once the bolts are removed, lift the chain support off the main body. To install the chain support, place it on the chain tool body. An integrated magnet in the chain tool body will help you position and align the support properly. Once the chain tool support is aligned, tighten the preset fixing bolts by turning them clockwise. While the unique design of the bolts helps to prevent over-torquing, we recommend approximately 5 Newton-meters. This will secure the chain support while allowing it to float as intended.

**B**

#### Pressing rivets out of a chain

1. Push the chain onto chain support to ensure proper positioning
2. Start turning the handle clockwise to drive the chain tool pin towards the chain
3. Push the chain rivet all the way out of the chain
4. Turn the spindle counterclockwise to retract the chain tool pin

**C**

#### Installing rivets into a chain

1. Install the master rivet into the chain.
2. Turn the handle counter-clockwise to create enough clearance in the chain tool body to mount the chain with master rivet and guide pin on the chain tool support. Mount the chain on the chain tool support and ensure it sits properly.
3. Start turning the handle clockwise to drive the chain tool pin towards the master rivet.
4. Push the master rivet through the chain.
5. Once the rivet is positioned properly, turn the spindle counter-clockwise to retract the chain tool pin.
6. Bring the chain tool to the other side of the chain and insert the guide of a master chain rivet into the shear slot. Rotate the chain tool to break off the master chain rivet guide.

**D**

#### Campagnolo chain peening

Campagnolo 11 & 12-speed chains require a few extra installation steps. After completing all 6 steps described above for installing rivets into a chain, follow steps 1-5 below.

1. Remove the peening screw from the chain tool body by using a 3 mm Hex wrench and turning it counter-clockwise. Be careful not to lose the spare pin after removing the bolt.
2. Insert the blocking bolt in the chain body as shown in the picture
3. Mount the chain onto the chain support and push it down on it to ensure it is properly positioned. Mind the chain tool orientation, the side from which the guide pin was broken off should face the peening screw.
4. Turn the spindle clockwise until it contacts the master chain rivet. Once in contact, start pushing down the chain against chain support with your thumb and continue turning the spindle until you feel resistance on the spindle handle. Continue by turning the spindle  $\frac{3}{4}$  of a turn to ensure the master rivet is peened correctly. The chain must be pushed down with your thumb during that process.
5. Turn the spindle counter-clockwise to free the chain from the chain tool, remove the peening screw with 3mm Hex and return it to the other side of the chain tool body.

**E**

#### Spare chain tool pin

A replacement pin is located in the spare chain pin compartment under the chain tool spindle handle. Use a 3 mm hex wrench to turn the screw/Campagnolo peening screw counter-clockwise to open the spare pin compartment and access the spare pin.