

# Tool box

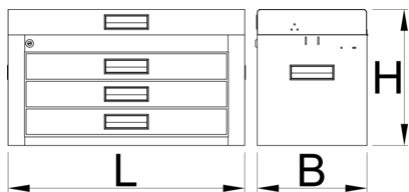
3800





## Параметри на продукта

- For all you motorbike enthusiasts who strive for a tidy working environment and like to repair your moto bikes at the comfort of your home, the portable toolbox is the right choice for you. Whether you're in the field, at the racetrack or at home, your tool kits will always be neatly stowed and organised. All with the aim of a comprehensively organised working environment.
- материал: ламарина
- central locking system for drawer and lid with a lock
- боядисани с екологична боя, несъдържаща кадмий и олово
- drawers have ball bearing slides with soft closing
- gas struts assisted opening
- 100% pull-out drawers enable a good overview and easy access to tools.
- 3 drawers ( L 563 x W 270 x H 75mm)
- storage space under the lid sized 560 x 267mm
- ergonomic handle for tool box carrying and drawer opening

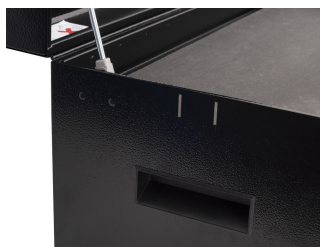
- possibility to extend the functionality of the tool box with T-wrench and screwdriver holders (left and right)



	L	B	H	
629487	694	336	400	21400

\* Снимките на продуктите са символични. Всички размери са в мм., теглото е в грамове .

## Употреба (снимки)



## Аксесоари



Държач за ключове с Т-образна дръжка



Държач за отвертки



Комплект подложки за 3800

## Свързани продукти



Комплект инструменти за ендуро в инструментален сандък 3800



MX Master Tool Set



Road Pro Tool Set