

水泵钳

449/1PYTHON



配置文件

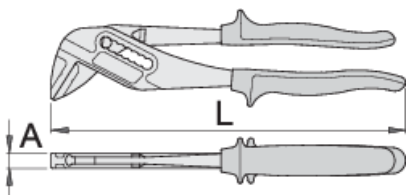
Premium 

产品属性

- 材料:优质铬钒钢
- 落锻,完全淬火与回火
- 表面处理:根据ISO 1456:2009标准镀铬
- 重型双成分材料手柄

优势:

- 钳口有7种位置可调
- 钳口平行有助于保护工件免受损坏
- 449.1额外的塑料钳口,用于保护镀铬和抛光的工件。



615032

L

240

A

11

Omax

42



420

* Images of products are symbolic. All dimensions are in mm, and weight in grams. All listed dimensions may vary in tolerance.

用途 (pictures)

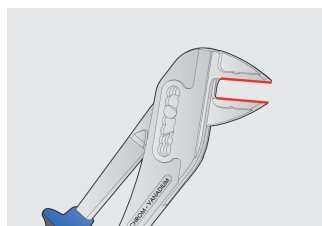
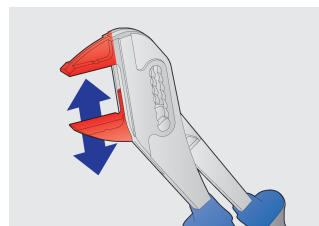
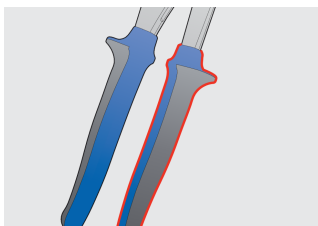
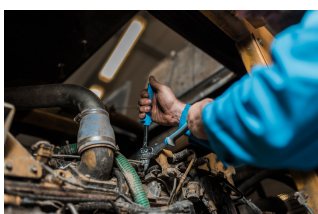
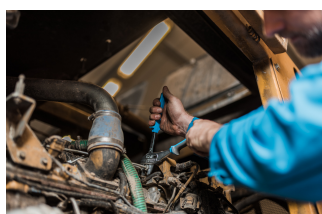


Photo (pictures)



配件



449/1PYTHON配套使用的塑料钳口