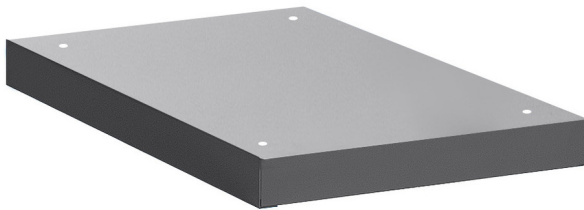


Основа за тесен инструментален шкаф

990NDU-BLACK



Профили

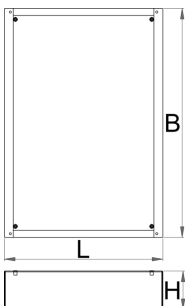


Параметри на продукта

- материал: ламарина

Характеристики :

- Height Elevation: Raises workbench height by 60mm (total base height 78mm) for improved ergonomics.
 - Efficient Storage: Allows for easy storage of tool carriages beneath your workbench.
 - Durable Construction: High-quality steel build ensures long-lasting durability.
- Upgrade your workshop with the Unior 990NDU BLACK Underbase.





627689



60

L

442

B

640

H

78



6400

* Снимките на продуктите са символични. Всички размери са в мм., теглото е в грамове .