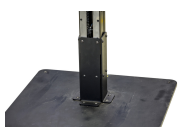


Height extension kit for 1693EL

1693EL.11



Gebruik



Product attributen

- Do you or your employee(s) fit in the taller category? Or you would like to access the bicycle from a different angle?
- Height extension kit is a perfect solution for taller technicians as it lifts the highest and the lowest position of

the clamp on your electric repair stand 25 cm higher. As the bicycle can be lifted higher from the ground it also enables a view and access that was previously not possible or at least not practical.

- Extension mounts between the electric repair stand column and the metal fixed plate or the floor. The height extension kit is only compatible with the Unior electric repair stands with the aluminum main column.



629165

7080

Retail verpakking



629165

Transport verpakking



629165