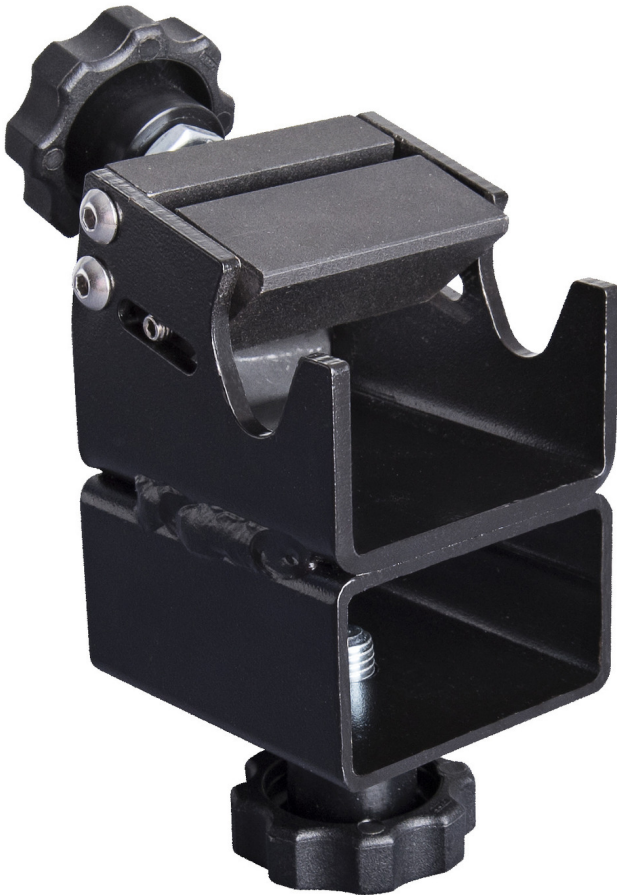


Through axle adapter for 1693R

1693R.2



Product attributes

- Through axle adapter is compatible with 1693R series road stands. It enables fixation of bikes with 12 mm or 15 mm through axles. To mount the bicycle on the adapter, simply remove the wheel from the bike and install the bike's through axle back in to the fork or frame; adapter then clamps the through

axle and secures the bike in place.



628710

Retail packaging



628710

Transport packaging



628710