

# Inner bearing puller

689/5BI-US



## Profiles

---



## Product features

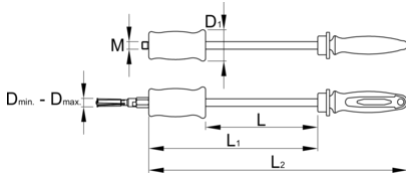
- material: premium chrome vanadium steel
- drop forged, entirely hardened and tempered
- surface finish: zinc plated according to ISO 2081:2018 (E)
- ergonomic heavy duty double component handle

## Advantages:

- Set includes 6 pcs of expandable collet for inner bearing dimensions 6.5-8,10-12, 12-15, 17-20, 22-28, 30-36

## Usage:

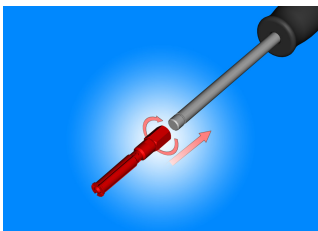
- It is used for extraction of different typ of bearing. Expandable collet grips inner bearing race. and pulls it out.
- The bearing is extracted by impact forces of 1kg sliding hammer.



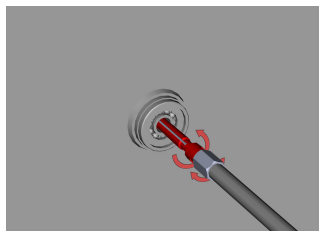
	$D \downarrow$	$D \uparrow$	D1	L	L1	L2	M	
626629	6,5	36	50	180	271	415	M12	4174

\* Images of products are symbolic. All dimensions are in mm, and weight in grams. All listed dimensions may vary in tolerance.

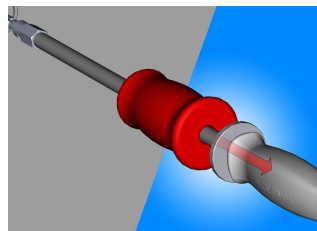
### Usage (pictures)



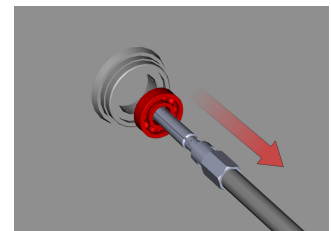
Before starting the application, you need to screw appropriate expandable collet dimension on the handle.



First inserted expandable collet through the hole in the bearing which will be extracted out of the housing. Then start to screw thorn into collet, which has a function that expands collet body, which adapts to the bearing bores.



Start with steady hits extracting bearing with help of sliding hammer.



After several strokes fast and easy extract bearing from housing without damage.

### Spare parts

Expandable collet for 689/5BI

### Related products



Inner bearing puller