

# Cabinet organizer for tool trays

991LMS.C2



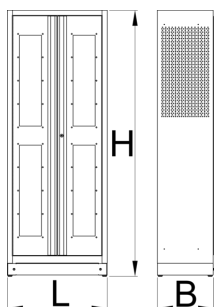
Profili

---



Atributi proizvoda

- Cabinet organizer for tool trays with nine shelves allows a visible and structured way of storing tools. The trays are slanted for visibility purposes, but can also be mounted in a horizontal position. The trays fit the standard 3/3 inserts with slots for various hand tools. The trays fit the trolleys and are easily replaceable.
- materijal: Premium Plus lim
- vrata zaključana s bravom i preklopnim ključem
- plexiglass door for viewing the cabinet interior
- the doors open 180°
- unlocked doors are held by magnets
- includes 9 shelves at a 20° angle for a better overview of the tools in SOS inserts
- 9 metal trays for storage and transport of 3/3 SOS foam trays are included in delivery of the cabinet
- a shelf with a front edge for limiting the tray
- the shelves basically have spacing of 170mm
- the shelves are reinforced
- the side parts of the cabinet in the upper part are perforated for attaching accessories
- the cabinet bottom is made in such way that it allows the cabinet to be moved with standard transport equipment such as forklifts and hand pallet trucks
- basic dimensions of cabinet L 770 x W 430 x H 2052mm
- ekološki lak bez olova i kadmija



628542

L

770

B

430

H

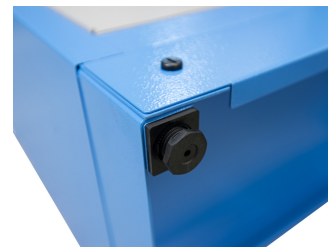
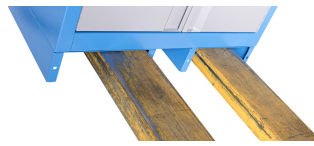
2052



116000

\* Slike proizvoda su simbolične. Sve dimenzije su u mm, masa je u g.

Upotreba (pictures)



## Accessories



Storage&transport metal tray

## Rezervni dijelovi



Zaključaj sa ključevima

## Related products



Cabinet organizer for documents



Tool charging station