

Servante EUROSTYLE

940E7



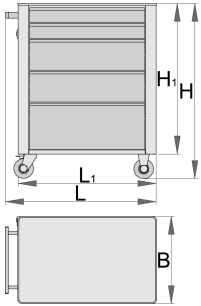
Profils



Description produit

- matière : tôle Premium Plus
- système de verrouillage centralisé avec clé repliable
- serrure à clé, un porte clé mousse inclu
- roues de diamètre 100 mm, dont 1 avec frein, résistantes à l'huile et aux acides
- Tiroirs coulissants avec glissières à roulement à billes.
- un revêtement synthétique protège le tiroir et les outils
- Possibilité d'ajouter des accessoires et des modules d'outillage UNIOR.
- laque éco à la norme QualiCoat

- 5 tiroirs (2 x L 560 x L 365 x H 70 mm, 2 x L 560 x L 400 x H 150 mm, 1 x L 560 x L 400 x H 230 mm)
- dimensions de base avec poignée et roues L 760 x L 440 x H 895 mm
- volume total des tiroirs: 147 litres
- charge statique : 400kg (1600Kg sans roue)
- capacité de charge dynamique des servantes : 300 kg
- Capacité de charge des tiroirs : 45 Kg.
- tiroirs compatibles avec les modules d'outils SOS 1/3, 2/3, 3/3



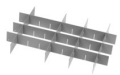
|  | L | B | H | L1 | H1 |  |
|--|-----|-----|-----|-----|-----|---|
| 627531 | 770 | 440 | 895 | 700 | 768 | 50500 |

* Les images des produits ne sont pas contractuelles. Toutes les dimensions sont en mm, les poids en grammes.

Accessories



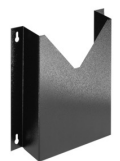
Coffre 5 tiroirs



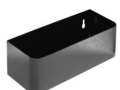
Jeu de cloisons pour petit tiroir de 940E et 940EV



Jeu de séparateurs pour tiroirs - 4 pièces pour 940E




Porte documents



Support bouteilles pour servantes EUROSTYLE




Plan de travail en ABS pour servantes EUROSTYLE

 Plan de travail en bois pour servantes EUROSTYLE

 Râtelier tournevis pour 940E et 940EV

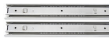
 Module mousse SOS compartimenté

 Module mousse SOS compartimenté

Pièces de rechange



Serrure + clés



Glissières de tiroir à roulement



Jeu de roues

Safety tips



- Lock all your drawers before trying to roll the tool carriage into a new work area.
- Set the brakes on the locking casters after you have rolled the cabinet to your work area.
- Treat your tool carriage, tool chests, or tool boxes with respect.
- Always follow the prescribed max load capacity of individual drawers and the carriage as a whole.
- Always put heavier objects in the bottom drawers
- Always close drawers when not in use.
- Always follow manufacturer manual instructions regarding assembly and repair of your tools.



- Don't open two or more drawers at the same time, there is high chance of it tipping over.
- Don't throw tools into drawer, always put the tools in.
- Don't use an opened drawer as a working surface.
- Don't clean a lacquered surface with a solvent cleaner.
- Don't pull a tool carriage as you won't be able to see where you are headed. Push it in front of you so you can see where you are going.
- Don't stack a tool carriage with too many extra chests or tool trays; it may tip over at the most unexpected time.
- Don't roll a tool carriage with loose tools or parts on top of the carriage.
- Don't roll a tool carriage too quickly; a pot hole in the floor or some hardware on the floor may cause an accident.
- Don't overload the drawers; if you haven't got room for all of your tools, you need a larger tool

carriage.

- Don't open up too many loaded drawers at a time; close each drawer before opening up another. Heavily loaded opened drawers are an invitation to tipping.