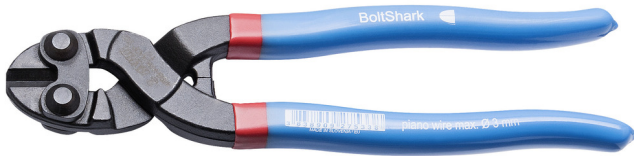


BOLTSHARK剪切钳

469SHARK/4AP



配置文件



标准

DIN ISO 5743

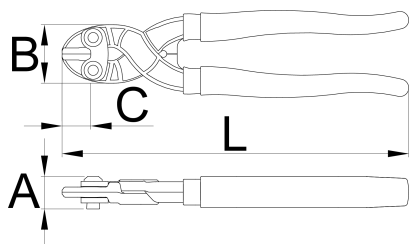
产品属性

- 这些超强力的切割刀用于容易切割金属线，包括淬火和回火合金，以及其他挤压金属。它们是根据人体工程学设计的，可以最大限度地施加力量，同时又便于使用。BoltShark刀具采用高碳钢经感应淬火的切削刃锻造而成，可切割6毫米软金属丝、4毫米硬钢和3.6毫米回火钢琴丝或钢丝弹簧。除铁丝外，Boltshark刀具还能快速、干净地切割直径为5mm的钉子、螺钉和铆钉。所包括的槽保持较厚的电线在适当的位置，由于钳口收紧设计，可以防止它沿切割边缘滚动。
- 由高碳钢锻造而成
- 完全淬火至~47HRc，切削刃感应淬火至~64HRc
- 表面涂有黑色防腐蚀涂层，并有油脂层保护
- 双浸塑料防滑手柄提供良好的人体工程学握持体验

优势：


- 采用双铆钉连接设计，使用复合作用，以更少的努力增加切削力。
- 当力矩最长时切割力量最大，BoltShark刀具的设计将刀柄紧密地结合在一起，从切割的一开始就可以施加最大的力量。
- 中央切割边缘在切割的两边留下一个斜面完成

- 用于软线(6毫米以下)、硬线(3、5毫米以下)、钢琴线(3毫米以下)的精密切割。
- 容易切割的零件，如螺钉，钉子，铆钉等高达4毫米的厚度



	L	B	A	C	
627533	200	34,8	19,5	16,5	354

cutting capacity (10N=1kg)

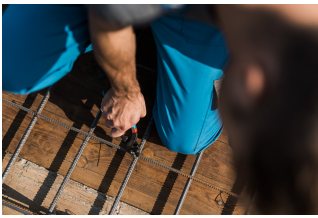
	L	max 2150 N/mm ² Ø↑	max 1600 N/mm ² Ø↑	max 650 N/mm ² Ø↑
627533	200	3	3,5	6

* Images of products are symbolic. All dimensions are in mm, and weight in grams. All listed dimensions may vary in tolerance.

用途 (pictures)



Photo (pictures)



Frequently asked questions

Do the names Shark and Boltshark mean anything?

These names describe the principles behind operating the cutting pliers.

What does it mean that the pliers are quenched and tempered and the head parts/teeth of the pliers are inductively hardened?

It means that the pliers are thermally processed by quenching and tempering their entire surface to a hardness of about 45HRc, while head parts are additionally inductively hardened to a hardness of at least 60HRc.

What is meant by the statement that pliers are made in accordance with the stated ISO standard?

It means that the pliers are in accordance with the international standard in terms of dimensions, strength and structure, and compliance is determined by prescribed tests.