

Axle vice

1639/2



Profielen

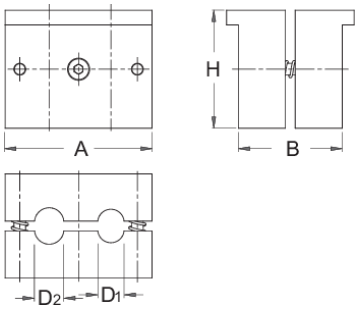




Product attributen

- materiaal: premium flex plus carbonstaal
- surface finish: trivalent chrome plated according to ISO 1456:2009

How to use the tool:

- The vice features two different diameter receptacles of 9 mm and 10 mm for inserting front or rear axles. Fits into jaws of engineers vice. The axle vice is easy to use. Two inserted springs will open the jaws automatically when axle vice is removed from engineers vice.



|  | D1 | D2 | A | B | H |  |
|--|----|----|----|------|----|---|
| 619715 | 9 | 10 | 50 | 35,5 | 40 | 500 |

* Afbeeldingen van producten zijn symbolisch. Alle afmetingen zijn in mm en gewicht in gram. Alle vermelde afmetingen kunnen variëren in tolerantie.

Gebruik (Afbeeldingen)

