

Axle vice

1639/2



Profiles

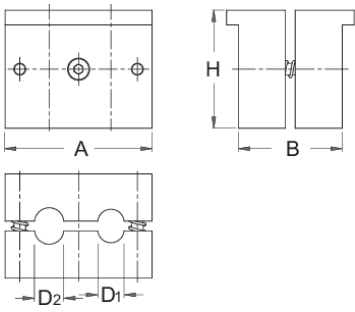




Product features

- material: premium flex plus carbon steel
- surface finish: trivalent chrome plated according to ISO 1456:2009

How to use the tool:

- The vice features two different diameter receptacles of 9 mm and 10 mm for inserting front or rear axles. Fits into jaws of engineers vice. The axle vice is easy to use. Two inserted springs will open the jaws automatically when axle vice is removed from engineers vice.



	D1	D2	A	B	H	
619715	9	10	50	35,5	40	500

* Images of products are symbolic. All dimensions are in mm, and weight in grams. All listed dimensions may vary in tolerance.

Usage (pictures)

