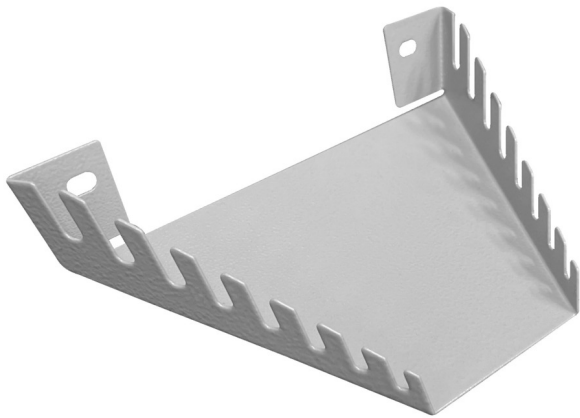


扳手架

h.990.WRE

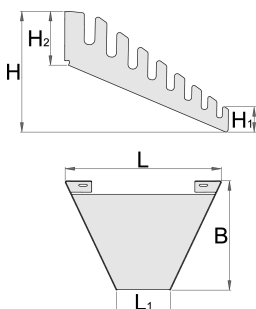





配置文件



产品属性

- 材料：优质金属板材1mm
- 用M6x10螺丝在穿孔的单面墙上组装
- 装配在背板上67°以下角度,允许更大的透明度和扳手的使用。
- 可存放8只开口扳手或8只高颈梅花扳手(规格24mm)



	L	L1	B	H	H1	H2		
629756	197	68	138	84,8	15,4	39	206	
627069	197	68	138	84,8	15,4	39	206	-

* Images of products are symbolic. All dimensions are in mm, and weight in grams. All listed dimensions may vary in tolerance.

用途 (pictures)

