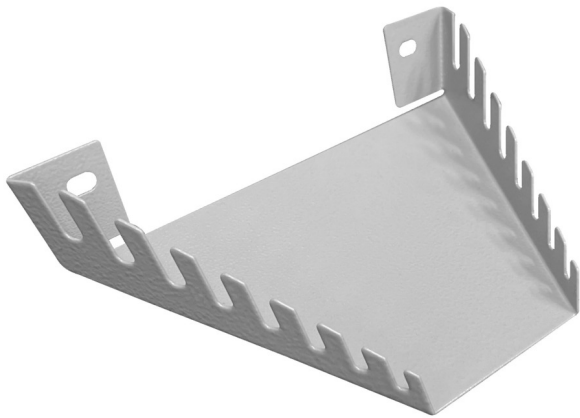


# Holder for wrenches

h.990.WRE



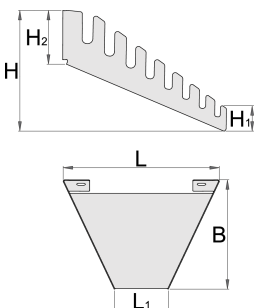
## Profiles




---



## Product features

- material: premium sheet metal 1mm
- assembly on the perforated Unior wall with screws M6x10
- assembly on the wall at an angle of 67° which allows better transparency and use of the wrenches
- 8 pcs of open end wrenches or 8 pcs of offset ring wrenches can be stored on the holder (up to dim. 24mm)



	L	L1	B	H	H1	H2		
629756	197	68	138	84,8	15,4	39	206	
627069	197	68	138	84,8	15,4	39	206	-

\* Images of products are symbolic. All dimensions are in mm, and weight in grams. All listed dimensions may vary in tolerance.

### Usage (pictures)

