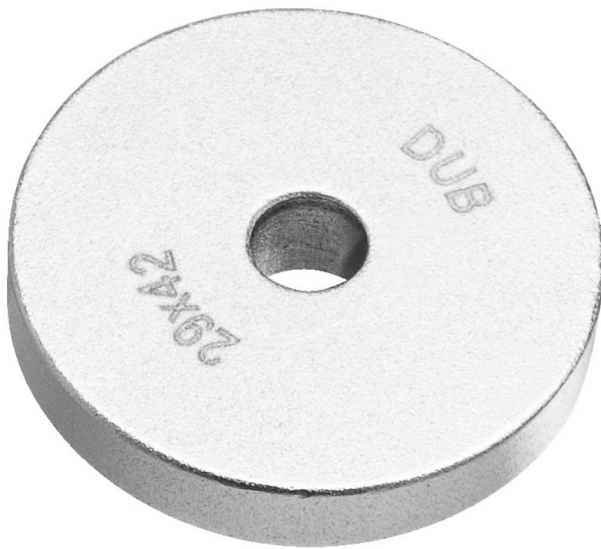
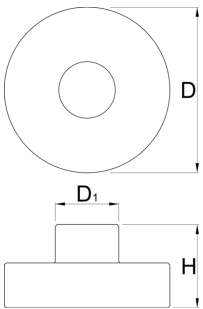


# Bearing press adaptor

1721.1



## 配置文件



625413

30 x 42 - BB30 (2x)

105

625414

24 x 41-BB86/92 (2x)

89



625415	22 x 41 (2x)	86
625416	10 x 26 - 6000	29
625417	10 x 22 - 6900	21
625418	12 x 28 - 6001	35
625419	12 x 24 - 6901	27
625420	15 x 28 - 6902	38
625421	15 x 24 - 6802	29
625422	15 x 26 - 1526	34
625423	17 x 28 - 17286	41
625424	17 x 30 - 6903	46
625425	17 x 26 - 6803	36
625426	20 x 32 - 6804	56
625427	25 x 37 - 6805	78
625428	9.5 x 22.2 (3/8" x 7/8") - R6 (2x)	21
625429	8 x 22 - 608	20
628582	DUB 29x42 (2x)	203

\* Images of products are symbolic. All dimensions are in mm, and weight in grams. All listed dimensions may vary in tolerance.