

Adaptor for tap BSA

1697.2/4

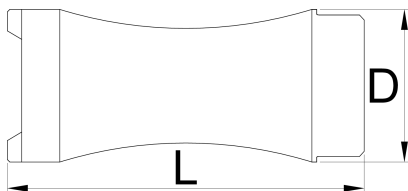


Profile



Caracteristicile produsului

- Adaptor is compatible with taps BSA 1697.1 and magnetic handle 1695/4BI for reamers and taps. Slot on the top of the adaptor enables quick and easy assembly of the tool together with the handle for reamers and taps 1695/4BI.



626467

L

75

D

32



240

* Imaginea produsului este simbolica. Toate dimensiunile sunt exprimate în mm, greutatea în grame.

Piese de schimb



Filiere de schimb pentru 1697



Guide for taps 1697.1 and 1698.1