

# Adaptor for tap BSA

1697.2/4

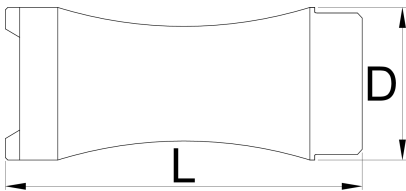


## Profili



## Atributi proizvoda

- Adaptor is compatible with taps BSA 1697.1 and magnetic handle 1695/4BI for reamers and taps. Slot on the top of the adaptor enables quick and easy assembly of the tool together with the handle for reamers and taps 1695/4BI.



626467

L

75

D

32



240

\* Slike proizvoda su simbolične. Sve dimenzije su u mm, masa je u g.

## Rezervni dijelovi



Rezervni ureznici za art.1697