

意式转换头

1698.2/4

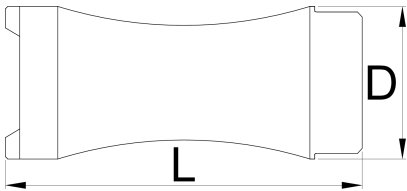


配置文件



产品属性

- 适配器兼容牙纹头 意式 1698.1和磁性把手用于螺纹铣刀1695/4BI。适配器上部槽口能快速和容易用1695/4BI磁性把手把工具组合到一起



626466

L

75

D

32



243

* Images of products are symbolic. All dimensions are in mm, and weight in grams. All listed dimensions may vary in tolerance.

Accessories



1698备用螺纹丝攻刀头