

# Multifunctional electrician`s pliers

514/1BI



## Profiles

---



## Product features

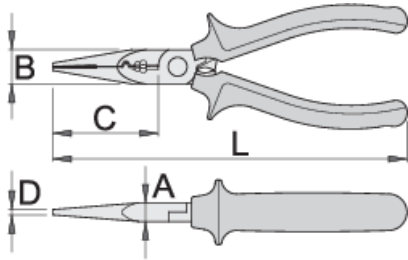
- material: premium plus carbon steel
- drop forged, entirely hardened and tempered
- cutting edges induction hardened
- head polished
- surface finish: chrome plated according to ISO 1456:2009
- heavy duty double - component handles

## Advantages:

- 6 different functions
- multi-toothed jaw
- ergonomically shaped handle
- extra strong grip
- Extra strong grip - the design and shape of the handles give the hand more leverage during use, enabling more stability and safer transmission of force.
- high durability
- Multi-toothed jaw prevents slipping and enables a better grip of cables, wires etc.

## Usage:

- The ground part of the jaw is intended for gripping objects with sensitive surfaces.
- The pliers can be used for crimping insulated spade terminals.
- Stripping off insulations from  $\varnothing$  2.2 mm to  $\varnothing$  3.0 mm (cable 1,5mm<sup>2</sup>).
- Stripping off insulations from  $\varnothing$  3.5 mm to  $\varnothing$  4.0 mm (cable 2,5mm<sup>2</sup>).
- Cutting wires from  $\varnothing$  2.2 mm to  $\varnothing$  4.0 mm.
- Crimping cable terminals up to  $\varnothing$  4.0 mm.



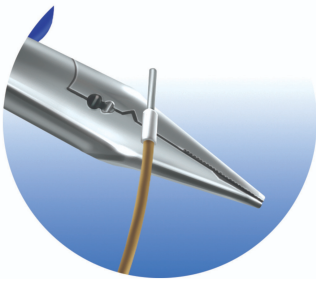
	L	B	D	A	C	
612782	160	16	2.5	9	49	141

cutting capacity (10N=1kg)

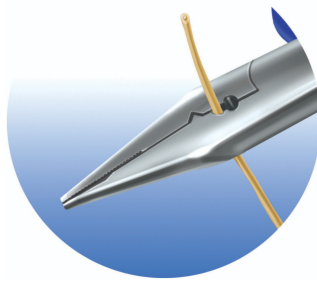
	L	max 1600 N/mm <sup>2</sup> Ø↑	max 650 N/mm <sup>2</sup> Ø↑
612782	160	1,6	2,0

\* Images of products are symbolic. All dimensions are in mm, and weight in grams. All listed dimensions may vary in tolerance.

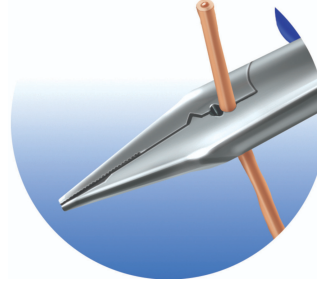
Usage (pictures)



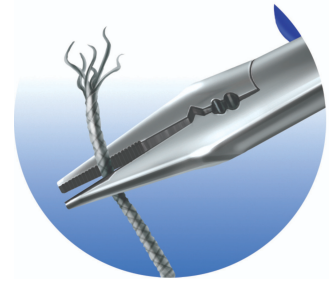
The pliers can be used for crimping insulated spade terminals.



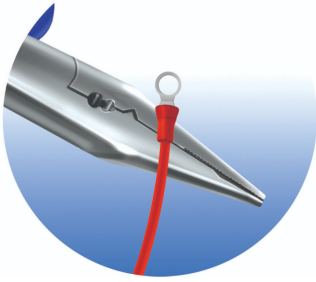
Stripping off insulations from Ø2.2 mm to Ø3.0 mm.



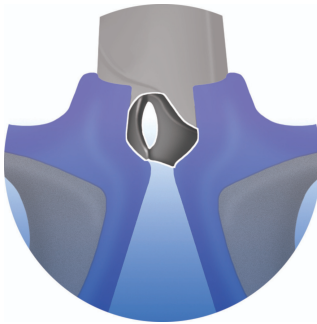
Stripping off insulations from Ø3.5 mm to Ø4.0 mm.



Multi-toothed jaw prevents slipping and enables a better grip of cables, wires etc.



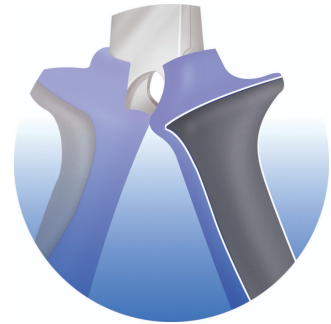
Multi-toothed jaw prevents slipping and enables a better grip of cables, wires etc.



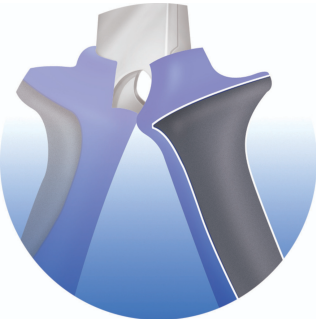
Crimping cable terminals up to Ø4.0 mm.



Ergonomic shape; the handles fit the hand perfectly due to their double component design. They are made from anti-slip material, preventing the arm from slipping during use.

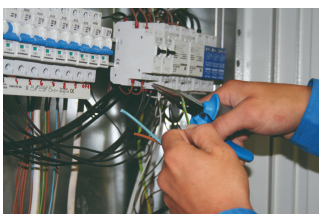


Extreme power of grip; design and shape of plier handles, enable more support for your hands while working. Work is done with more stability and safer power transmission



Extreme power of grip; design and shape of plier handles, enable more support for your hands while working. Work is done with more stability and safer power transmission

## Photo (pictures)



## Frequently asked questions

### **Can basic electrical works be performed using universal electrical installation pliers?**

Yes, universal electrical installation pliers can be used for cutting, removing insulation, gripping, pressing cable connections together and bending wires. This makes up the basic electrical works.