

带安全锁紧装置的欧景工具车

940EV4BLOCK



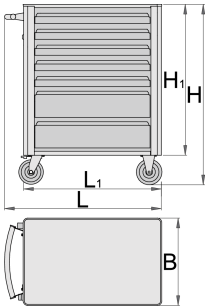
配置文件



产品属性

- 材料:金属板材
- 锁紧装置
- lock with key included also foam keyring
- 新的安全锁紧系统，防止抽屉同时打开。当一个抽屉打开时，所有其他的抽屉都是上锁状态，不能同时打开。
- 轮子直径125mm，提搞灵活性和稳定性
- 抽屉开关简便，允许使用者同时拉开不同层格的抽屉

- 滚珠轴承滑轨抽屉
- 合成材料制成的衬垫有助于抽屉和工具防损防震
- 抽屉锁紧装置防止抽屉意外滑开
- 可添加挂件
- 环保无铅镉涂层
- 固定配件用压铆螺母安装在工具车内
- 无轮静态负载能力：1600公斤
- 车厢载荷能力:500公斤
- 每层抽屉载荷能力：45公斤
- 7个抽屉（五个尺寸为563x365x70mm，两个尺寸为563x410x150mm）
- 手柄和车轮的基本尺寸为L760×W440×H895mm
- 抽屉总容量：140升
- 抽屉兼容SOS工具托盘1/ 3,2 / 3,3 /3



	L	B	H	L1	H1	
625000	800	440	923	700	768	57000

* Images of products are symbolic. All dimensions are in mm, and weight in grams. All listed dimensions may vary in tolerance.

Accessories



欧风工具箱 - 3层抽屉



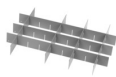
940EV钣金挂篮



940EV纸架



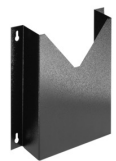
940EV瓶托



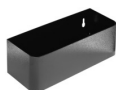
940E和940EV小抽屉分隔套装



940E和940EV的4件分隔套装



940E和940EV文件架



940E和940EV瓶托



940E和940EV的ABS板



940E和940EV木质板



940E和940EV螺丝刀架



920PLUS、940E和940EV的空SOS工具托盘



920PLUS, 940E和940EV的SOS泡沫工具盘

配件



Lock with keys



Ball-bearing slide for tool carriage with BLOCK system, set of 1 pair



Set of casters

Safety tips



- Lock all your drawers before trying to roll the tool carriage into a new work area.
- Set the brakes on the locking casters after you have rolled the cabinet to your work area.



- Don't open two or more drawers at the same time, there is high chance of it tipping over.
- Don't throw tools into drawer, always put the tools in.

- Treat your tool carriage, tool chests, or tool boxes with respect.
- Always follow the prescribed max load capacity of individual drawers and the carriage as a whole.
- Always put heavier objects in the bottom drawers
- Always close drawers when not in use.
- Always follow manufacturer manual instructions regarding assembly and repair of your tools.
- Don't use an opened drawer as a working surface.
- Don't clean a lacquered surface with a solvent cleaner.
- Don't pull a tool carriage as you won't be able to see where you are headed. Push it in front of you so you can see where you are going.
- Don't stack a tool carriage with too many extra chests or tool trays; it may tip over at the most unexpected time.
- Don't roll a tool carriage with loose tools or parts on top of the carriage.
- Don't roll a tool carriage too quickly; a pot hole in the floor or some hardware on the floor may cause an accident.
- Don't overload the drawers; if you haven't got room for all of your tools, you need a larger tool carriage.
- Don't open up too many loaded drawers at a time; close each drawer before opening up another. Heavily loaded opened drawers are an invitation to tipping.

Frequently asked questions

What does it mean if the tool carriage has the word BLOCK on the item label?

This means that it has a system of guides that makes it impossible to have two drawers open at the same time.