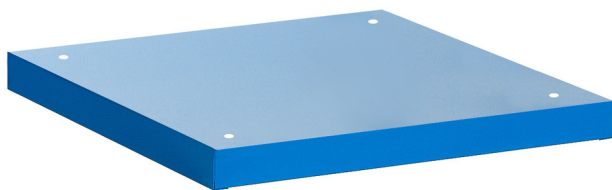


Široká nářadová skřín pod základnou

990WDU



Profily



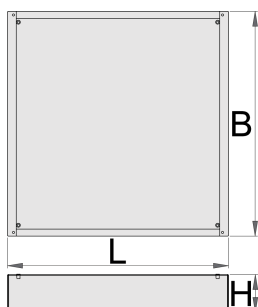
Vlastnosti produktu

- materiál: Premium plech

Funkce:

- Height Elevation: Raises workbench height by 60mm (total base height 78mm) for improved ergonomics.
- Efficient Storage: Allows for easy storage of tool carriages beneath your workbench.
- Durable Construction: High-quality steel build ensures long-lasting durability.

Upgrade your workshop with the Unior 990WDU Underbase.






L

B

H



		L	B	H	
627052	30	630	640	48	7200
625641	60	630	640	78	8200
625742	90	630	640	108	9200
625642	120	630	640	138	10000

* Obrázky produktů jsou symbolické. Všechny rozměry jsou v mm a hmotnost v gramech. Všechny uvedené rozměry se mohou lišit v toleranci.