

Clesti combinati

406/1BI



Profile

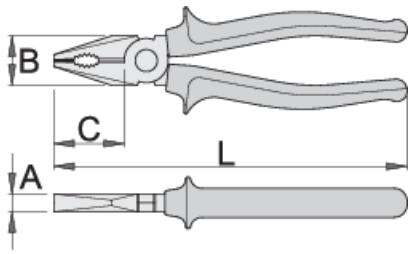


Standarde

DIN ISO 5746

Caracteristicile produsului

- material:compozitie speciala pentru calire revenire
- tratat complet
- partile taietoare tratate prin inductie
- cap polizat
- finisare:cromat in conformitate cu standardul ISO 1456:2009
- manere bimaterial pentru conditii grele
- marcaj injectat UNIOR
- in conformitate cu standardul ISO 5746



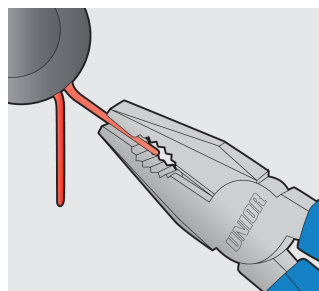
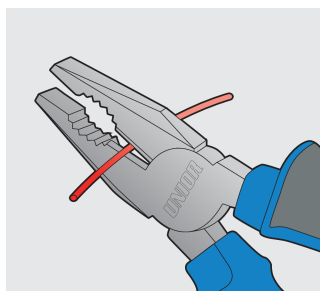
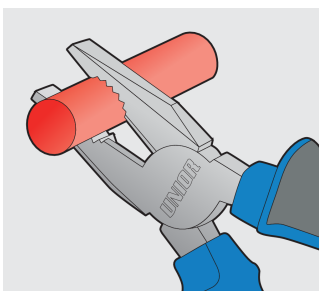
	L	B	C	A	
607870	160	24	35	9.5	224
607871	180	27	38	10	274
607872	200	29	41	10.5	341
608354	220	32	47	11	421

capacitatea de taiere (10N=1kg)

	L	max 1600 N/mm ² Ø↑	max 650 N/mm ² Ø↑
607870	160	1,6	2,0
607871	180	1,8	2,5
607872	200	2,0	2,5
608354	220	2,0	3,0

* Imaginea produsului este simbolica. Toate dimensiunile sunt exprimate în mm, greutatea în grame.

0 (pictures)



Safety tips



- Pliers should be oiled regularly. A drop of oil at the hinge will lengthen the tool life and assure easy operation.
- When cutting wire with pliers, you should always wear glasses or goggles.



- Don't use pliers for cutting hardened wire, unless specifically manufactured for this purpose.
- Don't expose pliers to excessive heat. This may ruin the tool.
- Don't use pliers as a hammer.

- Handles are provided for comfort. They are not intended to give user any degree of protection against electric shocks and should never be used on live electric circuits.

- Don't hammer on the handles. They may crack or break.

- Don't extend the length of plier handles to secure greater leverage.

- Don't use pliers on nuts or bolts. A wrench will do a better job and with less risk of damage to the fastener.

Frequently asked questions

Profilul capului de pe șurub s-a deformat într-o asemenea măsură încât nu poate fi deșurubat cu o șurubelniță. Ce instrument Unior poate fi utilizat în acest caz?

Cleștii cu șurub 407/4DP sunt cea mai bună alegere pentru deșurubarea șuruburilor cu profil de cap deteriorat.