

# Kliješta kombinirana

405/1BI



## Profili

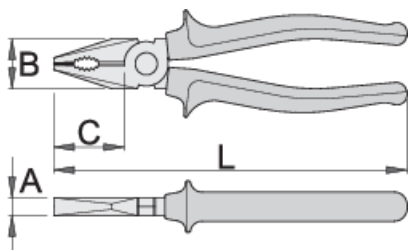




## Standardi

ISO 5746


## Atributi proizvoda

- materijal: Premium plus alatni čelik
- kovana, potpuno poboljšana i ojačana
- rezni rubovi induktivno kaljeni
- čeljusti polirane
- završna obrada: kromiranje po standardu ISO 1456:2009
- robusne ručke izolirane dvokomponentnim navlakama
- izrađena prema standardu ISO 5746



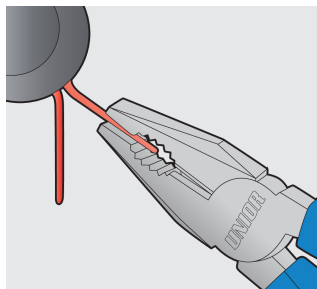
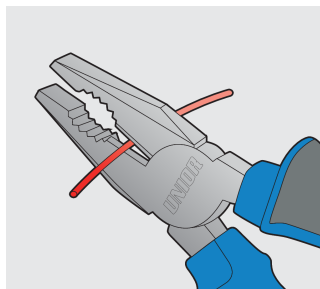
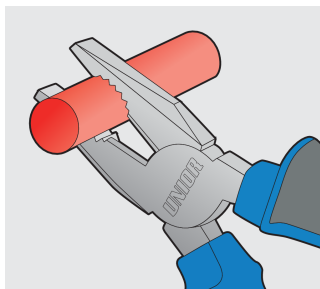
	L	B	C	A	
607867	160	24	35	9.5	224
607868	180	27	38	10	273
607869	200	29	41	10.5	351

sposobnost rezanja (10N=1kg)

	L	max 1560 N/mm <sup>2</sup> Ø↑	max 750 N/mm <sup>2</sup> Ø↑
607867	160	1,6	2,0
607868	180	1,8	2,5
607869	200	2,0	2,5

\* Slike proizvoda su simbolične. Sve dimenzije su u mm, masa je u g.

## Upotreba (pictures)



## Safety tips



- Pliers should be oiled regularly. A drop of oil at the hinge will lengthen the tool life and assure easy operation.
- When cutting wire with pliers, you should always wear glasses or goggles.
- Handles are provided for comfort. They are not intended to give user any degree of protection against electric shocks and should never be used on live electric circuits.



- Don't use pliers for cutting hardened wire, unless specifically manufactured for this purpose.
- Don't expose pliers to excessive heat. This may ruin the tool.
- Don't use pliers as a hammer.
- Don't hammer on the handles. They may crack or break.
- Don't extend the length of plier handles to secure greater leverage.
- Don't use pliers on nuts or bolts. A wrench will do a better job and with less risk of damage to the fastener.