

Dana të kombinuara

405/1BI



Profiles

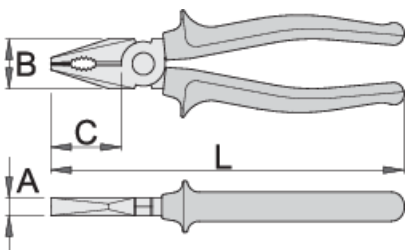




Standards

ISO 5746

Product features

- Materiali: çeliku të veçantë mjet
- rënie të falsifikuara, ngurtësuar tërësisht dhe nevrík
- prerja buzë induksion thekur
- kreu i lëmuar
- përfundojë sipërfaqe: krom kromuar për ISO 1456:2009 standarde
- detyrë e rëndë me dy komponent të trajtojë
- bërë sipas standardit DIN 5746



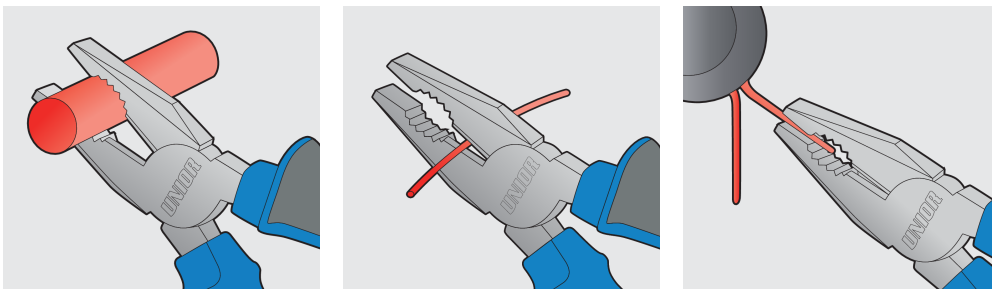
	L	B	C	A	
607867	160	24	35	9.5	224
607868	180	27	38	10	273
607869	200	29	41	10.5	351

Kapaciteti i prerjes (10N = 1 kg)

	L	max 1600 N/mm ² Ø↑	max 650 N/mm ² Ø↑
607867	160	1,6	2,0
607868	180	1,8	2,5
607869	200	2,0	2,5

* Imazhet e produkteve janë simbolike. Të gjitha dimensionet janë në mm, pesha në gram. Të gjitha dimensionet e listuara mund të ndryshojnë në tolerancë.

Usage (pictures)



Safety tips



- Pliers should be oiled regularly. A drop of oil at the hinge will lengthen the tool life and assure easy operation.
- When cutting wire with pliers, you should always wear glasses or goggles.
- Handles are provided for comfort. They are not intended to give user any degree of protection against electric shocks and should never be used on live electric circuits.



- Don't use pliers for cutting hardened wire, unless specifically manufactured for this purpose.
- Don't expose pliers to excessive heat. This may ruin the tool.
- Don't use pliers as a hammer.
- Don't hammer on the handles. They may crack or break.
- Don't extend the length of plier handles to secure greater leverage.
- Don't use pliers on nuts or bolts. A wrench will do a better job and with less risk of damage to the fastener.