

yan keskiler

461/1VDEDP



Profiles



Standards

DIN EN IEC 60900 (VDE 0682-201):2019-04; EN IEC 60900:2018

Product features

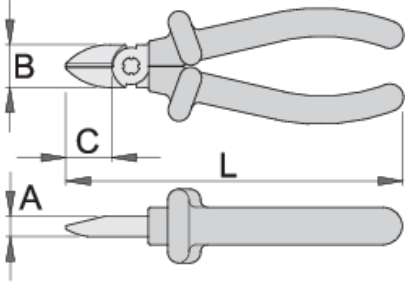
- malzeme: özel alet çeliği
- sıcak dövme, tamamen sertleştirilmiş ve temperlenmiş
- kesici ağızlar endüksiyonla sertleştirilmiştir
- başlık cilalıdır
- yüzey bitirme: ISO 1456:2009 standardına göre krom kaplamalı
- ISO 5749 ve EN IEC 60900 standardına göre yapılmıştır

Avantajları:

- saplar ek emniyet için çift katmanlı - çift renki yalıtımla yalıtılmıştır

Önemli!

- ikinci katmanın görünmesi halinde, VDE aletinizi yenisiyle değiştirin



Barcode	L	B	A	C	Weight
619193	140	19	9.5	18	174
619194	160	22.5	10	22	224

kesme kapasitesi (10N=1kg)

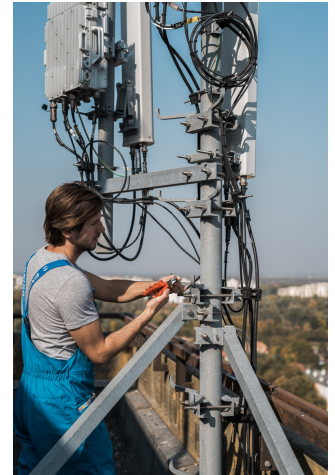
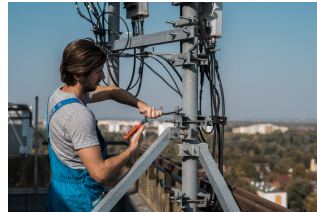
Barcode	L	max 1600 N/mm ² Ø↑	max 650 N/mm ² Ø↑
619193	140	1,6	2,0
619194	160	1,6	2,5

* Ürünlerin resimleri semboliktir. Bütün boyutlar mm ve ağırlık gram cinsindedir.

Usage (pictures)



Photo (pictures)



Frequently asked questions

Are certified insulated tools made through a different procedure than non-certified insulated tools?

The tools are made according to the same procedure.

Are insulated (VDE) tools considered as personal protective equipment (PPE)?

According to EU regulations, VDE tools are not considered as PPE.

Is it possible to work with insulated pliers under electrical voltage?

Yes, but only by professionals who follow safety requirements and use additional personal protective equipment.

Are the VDE tools only being sampled in series production?

The high voltage test (at 10kV) is performed fully on each tool. Other tests are performed in accordance with the EN60900 standard.