

Tronchese a tagliente diagonale

461/1VDEDP



Profili



Standard

DIN EN IEC 60900 (VDE 0682-201):2019-04; EN IEC 60900:2018

Attributi del prodotto

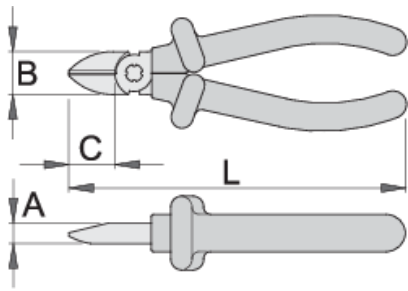
- materiale: acciaio al carbonio plus premium
- interamente bonificato
- bordi di taglio induriti a induzione
- teste lucidate
- finitura superficiale: cromata ISO 1456:2009
- conforme allo standard ISO 5749 e EN IEC 60900

Vantaggi:

- impugnatura bicomponente - bicolore isolata, per una doppia sicurezza

Importante!

- se è visibile il secondo strato, sostituite il vostro attrezzo VDE con uno nuovo



Barcode	L	B	A	C	Weight	Availability
619193	140	19	9.5	18	174	
619194	160	22.5	10	22	224	Till end of stock

capacità di taglio (10N=1kg)

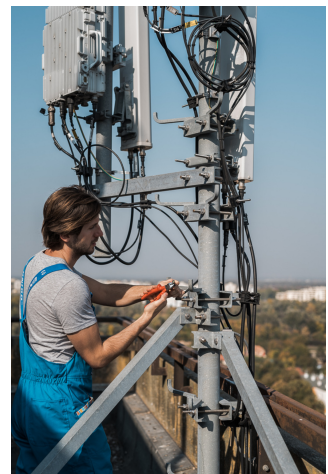
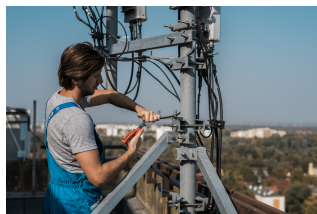
Barcode	L	max 1560 N/mm ² Ø↑	max 750 N/mm ² Ø↑
619193	140	1,6	2,0
619194	160	1,6	2,5

* Le immagini dei prodotti sono puramente simboliche. Tutte le dimensioni sono in mm, peso in grammi.

Utilizzo (pictures)



Photo (pictures)



Frequently asked questions

Are certified insulated tools made through a different procedure than non-certified insulated tools?

The tools are made according to the same procedure.

Are insulated (VDE) tools considered as personal protective equipment (PPE)?

According to EU regulations, VDE tools are not considered as PPE.

Is it possible to work with insulated pliers under electrical voltage?

Yes, but only by professionals who follow safety requirements and use additional personal protective equipment.

Are the VDE tools only being sampled in series production?

The high voltage test (at 10kV) is performed fully on each tool. Other tests are performed in accordance with the EN60900 standard.