

Kliješta za rezanje žice, kosa

461/1VDEDP



Profili



Standardi

DIN EN IEC 60900 (VDE 0682-201):2019-04; EN IEC 60900:2018

Atributi proizvoda

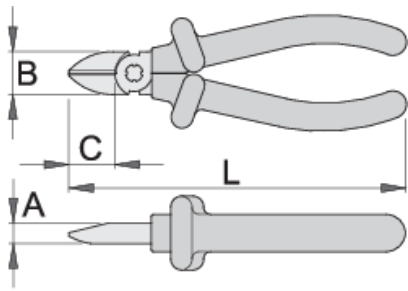
- materijal: poseban alatni čelik
- kovana, potpuno poboljšana i ojačana
- rezni rubovi induktivno kaljeni
- čeljusti polirane
- završna obrada: kromiranje po standardu ISO 1456:2009
- izrađeno po standardu ISO5749 i EN IEC 60900

Prednosti:

- ručke izolirane sa dva izolacijska sloja u dvije boje, koje omogućavaju dodatnu sigurnost

Važno!

- ukoliko drugi sloj postane vidljiv, alat zamijenite novim.



Barcode	L	B	A	C	Weight
619193	140	19	9.5	18	174
619194	160	22.5	10	22	224

sposobnost rezanja (10K=1kg)

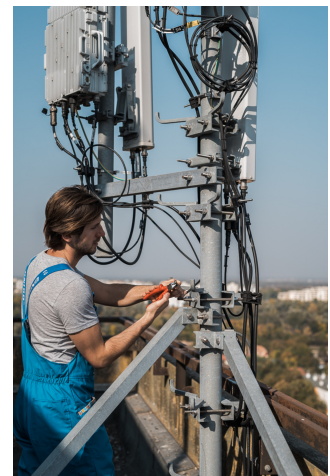
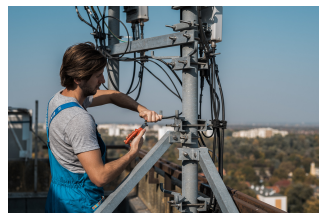
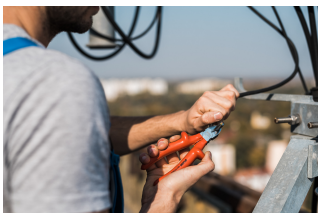
Barcode	L	max 1600 N/mm ² Ø↑	max 650 N/mm ² Ø↑
619193	140	1,6	2,0
619194	160	1,6	2,5

* Slike proizvoda su simbolične. Sve dimenzije su u mm, masa je u g.

Upotreba (pictures)



Photo (pictures)



Frequently asked questions

Are certified insulated tools made through a different procedure than non-certified insulated tools?

The tools are made according to the same procedure.

Are insulated (VDE) tools considered as personal protective equipment (PPE)?

According to EU regulations, VDE tools are not considered as PPE.

Is it possible to work with insulated pliers under electrical voltage?

Yes, but only by professionals who follow safety requirements and use additional personal protective equipment.

Are the VDE tools only being sampled in series production?

The high voltage test (at 10kV) is performed fully on each tool. Other tests are performed in accordance with the EN60900 standard.