

# Waterpump box joint pliers

447/1VDEDP



## Profiles



## Standards

DIN EN IEC 60900 (VDE 0682-201):2019-04; EN IEC 60900:2018

## Product features

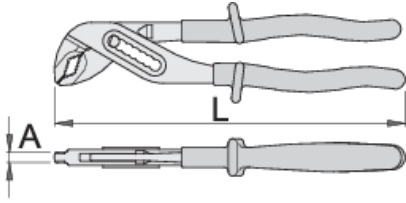
- material: premium chrome vanadium steel
- drop forged, entirely hardened and tempered
- working surfaces induction hardened
- surface finish: trivalent chrome plated to standard ISO 1456:2009
- made according to standard ISO 8976 and EN IEC 60900

## Advantages:

- handles are insulated with double layered - double coloured insulation for additional safety
- jaw aperture adjustable in 7 positions
- A special bulge prevents fingers to be pressed between the handles of the pliers.

## Important!

- if second layer is visible, replace your insulated tool with a new one.



619199

L

240

A

6.5

Omax

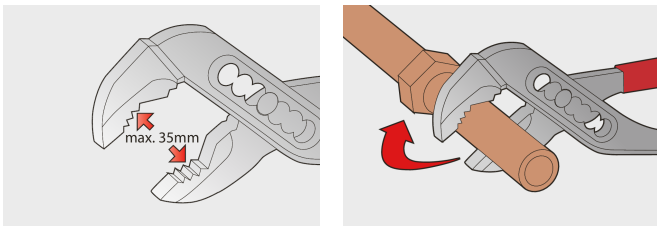
35



382

\* Images of products are symbolic. All dimensions are in mm, and weight in grams. All listed dimensions may vary in tolerance.

## Usage (pictures)



## Frequently asked questions

### **Are certified insulated tools made through a different procedure than non-certified insulated tools?**

The tools are made according to the same procedure.

### **Are insulated (VDE) tools considered as personal protective equipment (PPE)?**

According to EU regulations, VDE tools are not considered as PPE.

### **Is it possible to work with insulated pliers under electrical voltage?**

Yes, but only by professionals who follow safety requirements and use additional personal protective equipment.

### **Are the VDE tools only being sampled in series production?**

The high voltage test (at 10kV) is performed fully on each tool. Other tests are performed in accordance with the EN60900 standard.