

# Pinza per telefonia

420/1VDEDP



## Profili



## Standard

DIN EN IEC 60900 (VDE 0682-201):2019-04; EN IEC 60900:2018

## Attributi del prodotto

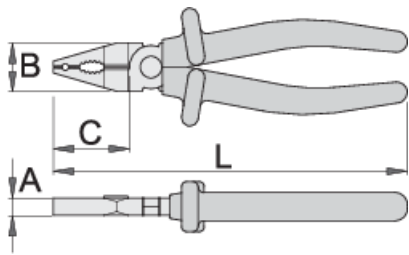
- materiale: acciaio al carbonio plus premium
- interamente bonificato
- bordi di taglio induriti a induzione
- teste lucidate
- finitura superficiale: cromata ISO 1456:2009
- conforme allo standard EN IEC 60900

## Vantaggi:

- impugnatura bicomponente - bicolore isolata, per una doppia sicurezza

## Importante!

- se è visibile il secondo strato, sostituite il vostro attrezzo VDE con uno nuovo



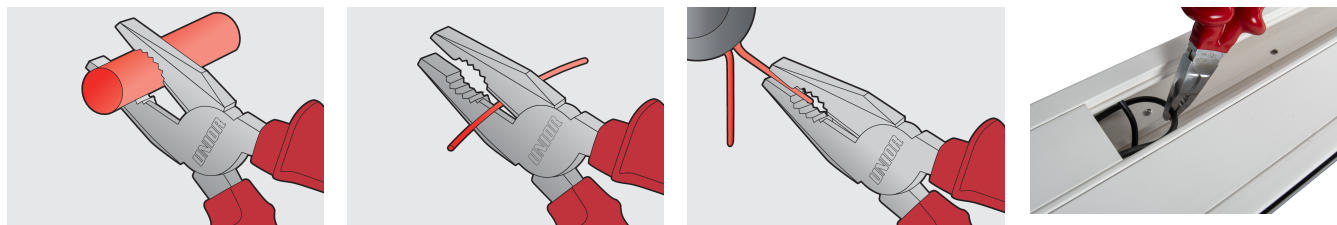
	L	B	C	A	
619176	180	24	45	11	221

capacità di taglio (10N=1kg)

	L	max 1600 N/mm <sup>2</sup> Ø↑	max 650 N/mm <sup>2</sup> Ø↑
619176	180	1,8	2,5

\* Le immagini dei prodotti sono puramente simboliche. Tutte le dimensioni sono in mm, peso in grammi.

### Utilizzo (pictures)



### Safety tips



- Pliers should be oiled regularly. A drop of oil at the hinge will lengthen the tool life and assure easy operation.
- When cutting wire with pliers, you should always wear glasses or goggles.



- Don't use pliers for cutting hardened wire, unless specifically manufactured for this purpose.
- Don't expose pliers to excessive heat. This may ruin the tool.
- Don't use pliers as a hammer.
- Don't hammer on the handles. They may crack or break.
- Don't extend the length of plier handles to secure greater leverage.
- Don't use pliers on nuts or bolts. A wrench will do a better job and with less risk of damage to the fastener.

## Frequently asked questions

### **Are certified insulated tools made through a different procedure than non-certified insulated tools?**

The tools are made according to the same procedure.

### **Are insulated (VDE) tools considered as personal protective equipment (PPE)?**

According to EU regulations, VDE tools are not considered as PPE.

### **Is it possible to work with insulated pliers under electrical voltage?**

Yes, but only by professionals who follow safety requirements and use additional personal protective equipment.

### **Are the VDE tools only being sampled in series production?**

The high voltage test (at 10kV) is performed fully on each tool. Other tests are performed in accordance with the EN60900 standard.