

Dana elektrokombinuara, izoluar

420/1VDEDP



Profiles



Standards

DIN EN IEC 60900 (VDE 0682-201):2019-04; EN IEC 60900:2018

Product features

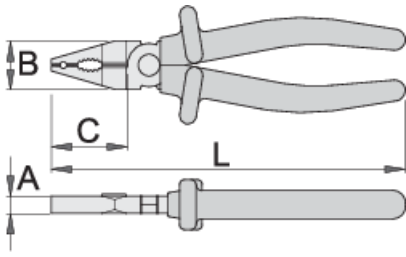
- materiali: çeliku të veçantë mjet
- rënie të falsifikuara, ngurtësuar tërësisht dhe nevrík
- prerjes buzë induksion thekur
- kreu i lëmuar
- përfundojë sipërfaqe: krom kromuar për ISO 1456:2009 standarde
- bërë sipas standardit EN IEC 60900

Avantazhet:

- trajton janë të izoluar me shtresa të dyfishtë - izolim të dyfishtë ngjyrë për sigurinë e të tjera

E rëndësishme!

- në qoftë se shtresa e dytë është e dukshme, të zëvendësojë mjet tuaj VDE me një të re.



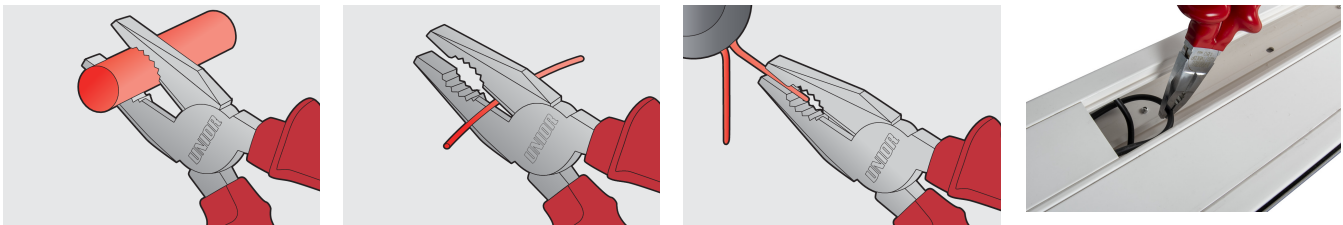
	L	B	C	A	
619176	180	24	45	11	221

Kapaciteti i prerjes (10N = 1 kg)

	L	max 1560 N/mm ² Ø↑	max 750 N/mm ² Ø↑
619176	180	1,8	2,5

* Imazhet e produkteve janë simbolike. Të gjitha dimensionet janë në mm, pesha në gram. Të gjitha dimensionet e listuara mund të ndryshojnë në tolerancë.

Usage (pictures)



Safety tips



- Pliers should be oiled regularly. A drop of oil at the hinge will lengthen the tool life and assure easy operation.
- When cutting wire with pliers, you should always wear glasses or goggles.



- Don't use pliers for cutting hardened wire, unless specifically manufactured for this purpose.
- Don't expose pliers to excessive heat. This may ruin the tool.
- Don't use pliers as a hammer.
- Don't hammer on the handles. They may crack or break.
- Don't extend the length of plier handles to secure greater leverage.
- Don't use pliers on nuts or bolts. A wrench will do a better job and with less risk of damage to the fastener.

Frequently asked questions

Are certified insulated tools made through a different procedure than non-certified insulated tools?

The tools are made according to the same procedure.

Are insulated (VDE) tools considered as personal protective equipment (PPE)?

According to EU regulations, VDE tools are not considered as PPE.

Is it possible to work with insulated pliers under electrical voltage?

Yes, but only by professionals who follow safety requirements and use additional personal protective equipment.

Are the VDE tools only being sampled in series production?

The high voltage test (at 10kV) is performed fully on each tool. Other tests are performed in accordance with the EN60900 standard.