

Combinatietang

406/1VDEDP



Profielen



Standaard

DIN EN IEC 60900 (VDE 0682-201):2019-04; EN IEC 60900:2018

Product attributen

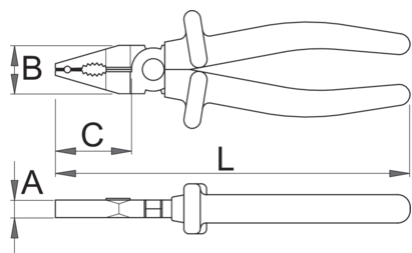
- materiaal: premium plus carbonstaal
- gesmeed, volledig gehard en getemperd
- snijkanten inductief gehard
- kop gepolijst
- afwerking oppervlak: verchromd volgens EN12540-norm
- beantwoordt aan de ISO 5746-norm en EN IEC 60900-norm

Voordelen:

- handvatten zijn dubbellagig en tweekleurig geïsoleerd voor extra veiligheid

Belangrijk !

- als de tweede laag zichtbaar wordt, vervang dan uw VDE gereedschap door een nieuw stuk.



	L	B	C	A		
619177	140	23	32	8	157	
619178	160	24	35	9.5	219	
619179	180	27	38	10	269	Till end of stock
619181	220	32	47	11	376	

knipcapaciteit (10N=1kg)

	L	max 1560 N/mm ² Ø↑	max 750 N/mm ² Ø↑
619177	140	1,6	2,0
619178	160	1,6	2,0
619179	180	1,8	2,5
619180	200	2,0	2,5
619181	220	2,0	3,0

* Afbeeldingen van producten zijn symbolisch. Alle afmetingen zijn in mm en gewicht in gram. Alle vermelde afmetingen kunnen variëren in tolerantie.

Gebruik (Afbeeldingen)

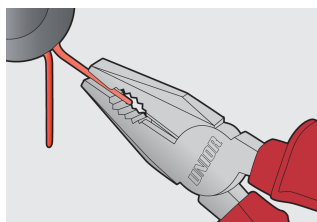
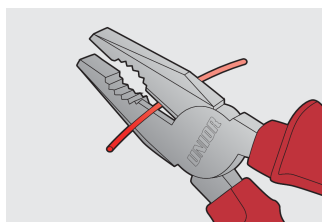
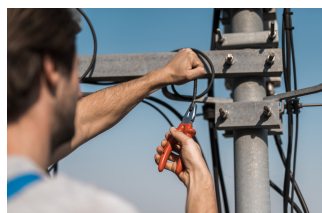


Foto (Afbeeldingen)



Veiligheidstips



- Pliers should be oiled regularly. A drop of oil at the hinge will lengthen the tool life and assure easy operation.
- When cutting wire with pliers, you should always wear glasses or goggles.



- Don't use pliers for cutting hardened wire, unless specifically manufactured for this purpose.
- Don't expose pliers to excessive heat. This may ruin the tool.
- Don't use pliers as a hammer.
- Don't hammer on the handles. They may crack or break.
- Don't extend the length of plier handles to secure greater leverage.
- Don't use pliers on nuts or bolts. A wrench will do a better job and with less risk of damage to the fastener.

Veelgestelde vragen

Are certified insulated tools made through a different procedure than non-certified insulated tools?

The tools are made according to the same procedure.

Are insulated (VDE) tools considered as personal protective equipment (PPE)?

According to EU regulations, VDE tools are not considered as PPE.

Is it possible to work with insulated pliers under electrical voltage?

Yes, but only by professionals who follow safety requirements and use additional personal protective equipment.

Are the VDE tools only being sampled in series production?

The high voltage test (at 10kV) is performed fully on each tool. Other tests are performed in accordance with the EN60900 standard.