

钢丝钳

406/1VDEDP



配置文件



标准

DIN EN IEC 60900 (VDE 0682-201):2019-04; EN IEC 60900:2018

产品属性

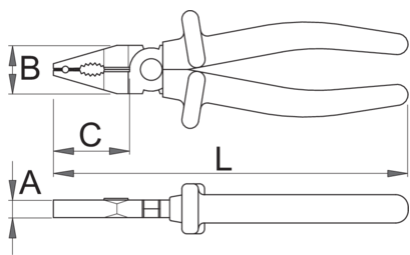
- 材料：特种工具钢
- 落锻，完全淬火与回火
- 切削刃感应淬火
- 头部抛光
- 表面处理：依据ISO 1456:2009进行镀铬处理
- 根据ISO 5746标准和EN IEC 60900生产

优势：

- 通过双层涂料绝缘的把手 — 提供额外安全的双色绝缘保护

重要事项！

- 如果第二层显露出来，请立即更换您的VDE工具



Barcode	L	B	C	A	Weight
619177	140	23	32	8	157
619178	160	24	35	9.5	219
619179	180	27	38	10	269
619181	220	32	47	11	376

cutting capacity (10N=1kg)

Barcode	L	max 1600 N/mm ² Ø↑	max 650 N/mm ² Ø↑
619177	140	1,6	2,0
619178	160	1,6	2,0
619179	180	1,8	2,5
619180	200	2,0	2,5
619181	220	2,0	3,0

* Images of products are symbolic. All dimensions are in mm, and weight in grams. All listed dimensions may vary in tolerance.

用途 (pictures)

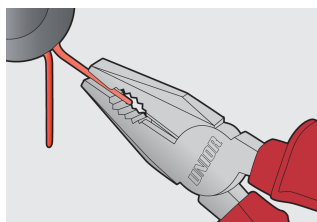
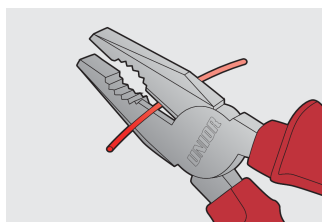
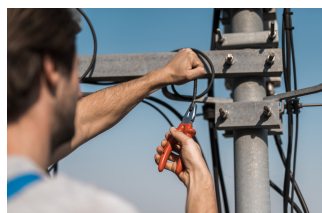


Photo (pictures)



Safety tips



- Pliers should be oiled regularly. A drop of oil at the hinge will lengthen the tool life and assure easy operation.
- When cutting wire with pliers, you should always wear glasses or goggles.



- Don't use pliers for cutting hardened wire, unless specifically manufactured for this purpose.
- Don't expose pliers to excessive heat. This may ruin the tool.
- Don't use pliers as a hammer.
- Don't hammer on the handles. They may crack or break.
- Don't extend the length of plier handles to secure greater leverage.
- Don't use pliers on nuts or bolts. A wrench will do a better job and with less risk of damage to the fastener.

Frequently asked questions

Are certified insulated tools made through a different procedure than non-certified insulated tools?

The tools are made according to the same procedure.

Are insulated (VDE) tools considered as personal protective equipment (PPE)?

According to EU regulations, VDE tools are not considered as PPE.

Is it possible to work with insulated pliers under electrical voltage?

Yes, but only by professionals who follow safety requirements and use additional personal protective equipment.

Are the VDE tools only being sampled in series production?

The high voltage test (at 10kV) is performed fully on each tool. Other tests are performed in accordance with the EN60900 standard.