

Steerer tube cutting guide

1604/2PLUS



Profiles

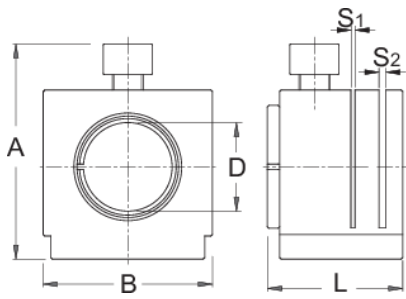


Product features

- material: premium flex plus carbon steel
- for dimensions: 1", 1-1/4", 1-1/8", 1-1/2"
- The 1604/2PLUS enables mounting of the measuring gauge item 1604.1/2PLUS, which enables fast and precise determination of steerer tube length desired after the cut.

How to use the tool:

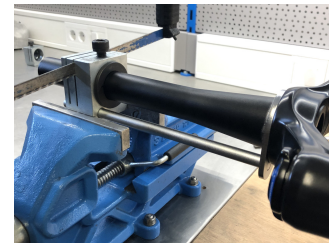
- When the steerer tube on a new fork is longer than necessary, it needs to be shortened to the correct length. The cutting guide enables an even and precise cut of the steerer tube with dimensions 1", 1-1/4", 1-1/8", 1-1/2". Clamp the fork into the cutting rail, the cut must be positioned exactly on the opening of the guide itself. Lightly tighten the screw. Install the cutting guide along with the fixed fork to the vice on the work bench. Saw the steerer tube by means of a saw (product no. 750) through the opening in the guide. The compact and precision housing, made in a compact does not leave scratches on the steerer tube.



Barcode	D1	D2	D3	D4	S1	S2	A	B	L	Weight
623417	1"	1.1/8"	1.1/4"	1.1/2"	1,5	2,5	60	60	38	918

* Images of products are symbolic. All dimensions are in mm, and weight is in grams. All listed dimensions may vary in tolerance.

Usage (pictures)



Spare parts



Bushing for 1604/2PLUS