

3/4" 气动附件

232.8/4

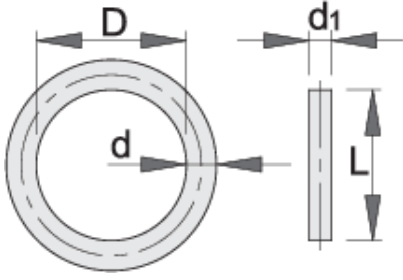






配置文件



产品属性

- 针材料: 铬钼钢
- 环材料: 橡胶
- 表面光洁度: 按DIN标准磷化



			D	d	L	d1	
603996	3/4"	17 - 46	35	4.5	35	4	11

* Images of products are symbolic. All dimensions are in mm, and weight in grams. All listed dimensions may vary in tolerance.

用途 (pictures)

