

3/4" 气动万向节

232.6/4

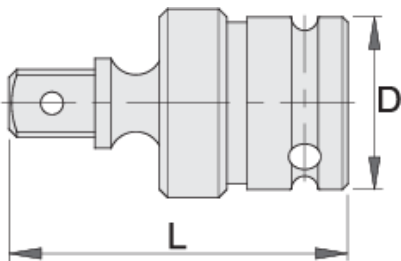


配置文件



产品属性

- 材料：铬钼钢
- 落锻，完全淬火与回火
- 表面处理：根据ISO 9717标准进行磷酸盐处理



603994



3/4"

D

44

L

90



525

* Images of products are symbolic. All dimensions are in mm, and weight is in grams. All listed dimensions may vary in tolerance.

Safety (pictures)

