

3/4" 气动转接头

232.7/4

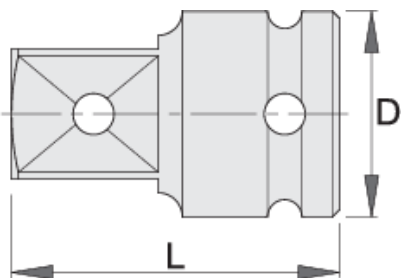


配置文件



产品属性




- 材料：铬钼钢
- 落锻，完全淬火与回火
- 表面处理：根据ISO 9717标准进行磷酸盐处理



D

L



|  |  | D | L |  |
|--|---|----|----|---|
| 603995 | 3/4" - 1/2" | 44 | 56 | 323 |
| 618708 | 3/4" - 1" | 44 | 63 | 443 |

* Images of products are symbolic. All dimensions are in mm, and weight in grams. All listed dimensions may vary in tolerance.

Safety (pictures)

