

# 1"冲击转接头

233.7/4

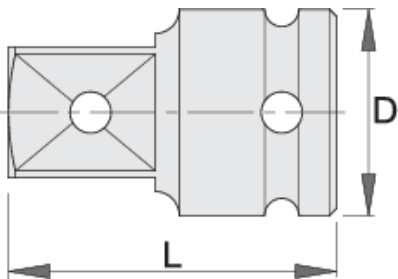


## 配置文件



## 产品属性

- 材料：铬钼钢
- 落锻，完全淬火与回火
- 表面处理：根据ISO 9717标准进行磷酸盐处理



615217



1" - 3/4"

D

54

L

75



661



D

L



617303

1" - 1.1/2"

54

90

1107

\* Images of products are symbolic. All dimensions are in mm, and weight in grams. All listed dimensions may vary in tolerance.

### Safety (pictures)

