

# Slagmoerdopsleutel 1/2", TX inwendig

231/4TX

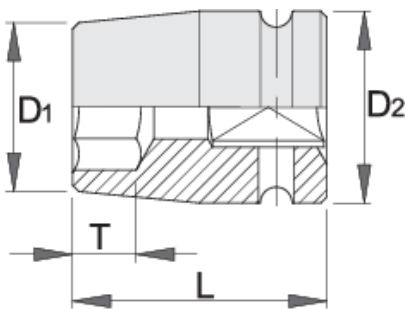


## Profielen



## Product attributen

- material: premium flex chrome vanadium steel
- drop forged, entirely hardened and tempered
- surface finish: phosphated to standard ISO 9717



612880



E 10

D1

15

D2

25

L




38

T

7.5



90

		D1	D2	L	T	
612881	E 12	16	25	38	8.5	90
612882	E 14	18.5	25	38	10	95
612883	E 16	20	25	38	11	95
612884	E 18	22	25	38	12	95
612885	E 20	25	30	38	13.5	145
612886	E 24	28.5	30	45	21	170

\* Afbeeldingen van producten zijn symbolisch. Alle afmetingen zijn in mm, en het gewicht in grammen. Alle vermelde afmetingen kunnen variëren in tolerantie.

### Veiligheid (Afbeeldingen)

