

1/2"冲击附件

231.8/4

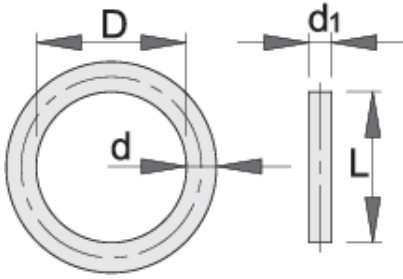





配置文件



产品属性

- 针材料: 铬钼钢
- 环材料: 橡胶
- 表面光洁度: 按DIN标准磷化



		D	d	L	d1	
603997	10 - 14	20	4	20	3	8
603998	15 - 32	25	4	25	3	9

* Images of products are symbolic. All dimensions are in mm, and weight in grams. All listed dimensions may vary in tolerance.

用途 (pictures)

