

1/2"冲击转接头

231.7/4

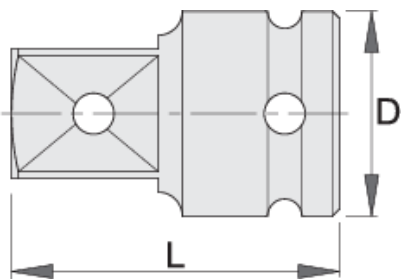


配置文件



产品属性

- 材料：铬钼钢
- 落锻，完全淬火与回火
- 表面处理：根据DIN12476标准进行磷酸盐处理



603979



1/2" - 3/4"



30



48



169



D

L



612120

1/2" - 3/8"

25

38

70

* Images of products are symbolic. All dimensions are in mm, and weight in grams. All listed dimensions may vary in tolerance.

Safety (pictures)

