

1/2"冲击万向节

231.6/4

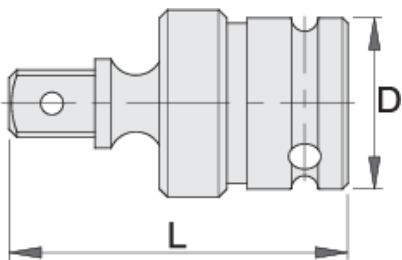


配置文件



产品属性

- 材料：铬钼钢
- 落锻，完全淬火与回火
- 表面处理：根据DIN12476标准进行磷酸盐处理



609460



1/2"

D

32

L

60



202

* Images of products are symbolic. All dimensions are in mm, and weight is in grams. All listed dimensions may vary in tolerance.

Safety (pictures)

