

3/8"冲击万向节

230.6/4

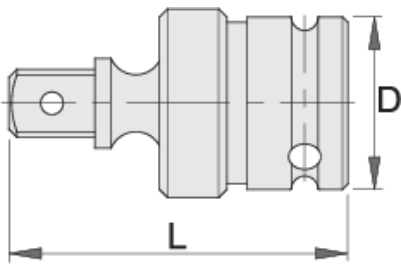


配置文件



产品属性

- 材料：铬钼钢
- 落锻，完全淬火与回火
- 表面处理：根据DIN12476标准进行磷酸盐处理



612077



3/8"

D

23.9

L

51



98

* Images of products are symbolic. All dimensions are in mm, and weight in grams. All listed dimensions may vary in tolerance.

Safety (pictures)

