

3/8"冲击转接头

230.7/4

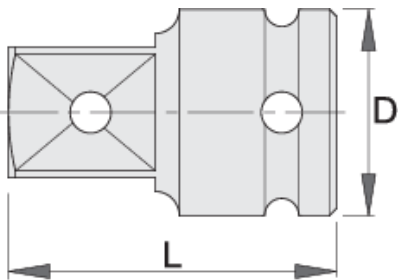


配置文件



产品属性

- 材料：铬钼钢
- 落锻，完全淬火与回火
- 表面处理：根据DIN12476标准进行磷酸盐处理



612078



3/8" - 1/2"

D

22

L

36



67

* Images of products are symbolic. All dimensions are in mm, and weight in grams. All listed dimensions may vary in tolerance.

Safety (pictures)

